

Supplementary Material

Three Novel Triterpene Glycosides from the Sea Cucumber *Stichopus chloronotus* with Potent Cytotoxic Activities

Osama Y. Althunibat¹, Ridzwan Bin Hashim², Muhammad Taher³, Jamaludin Mohd. Daud⁴

¹Department of Medical Analysis, Princess Aisha Bint Al-Hussein Faculty of Nursing and Health Sciences, Al-Hussein Bin Talal University, Ma'an, 71111, Jordan.

²Faculty of Allied Health Sciences, International Islamic University Malaysia, Kuantan, Pahang 25200, Malaysia

³Faculty of Pharmacy, International Islamic University Malaysia, Jalan Sultan Ahmad Shah, Kuantan, Pahang 25200, Malaysia

⁴Faculty of Science, International Islamic University Malaysia, Jalan Istana Bandar Indera Mahkota, 25200, Kuantan, Pahang, Malaysia

*Corresponding Author: althunibatjust2001@yahoo.com

List of Supplementary Materials

Figure S1: IR spectra of compound A

Figure S2: +ESI-TOF-MS spectra of compound A. a) High resolution of the high molecular weight region; b) Low molecular weight region

Figure S3: Proton NMR Spectrum OF Compound A

Figure S4: First expanding of proton NMR spectrum of compound A

Figure S5: Second expanding of proton NMR spectrum of compound A

Figure S6: Third expanding of proton NMR spectrum of compound A

Figure S7: DEPT NMR spectrum of compound A

Figure S8: Expanded DEPT NMR spectrum of compound A

Figure S9: HMQC spectrum of compound A

Figure S10: HMBC spectrum of compound A

Figure S11: Expanded HMBC spectrum of compound A

Figure S12: COSY spectrum of compound A

Figure S13: IR Spectra of compound B

Figure S14: +ESI-TOF-MS spectra of compound B. a) High resolution (HR) of the high molecular weight region; b) Low molecular weight region

Figure S15: Proton NMR spectrum of compound B

Figure S16: First expanding of proton NMR spectrum of compound B

Figure S17: Second expanding of proton NMR spectrum of compound B

Figure S18: Third expanding of proton NMR spectrum of compound B

Figure S19: DEPT NMR spectrum of compound B

Figure S20: First expanding of DEPT NMR spectrum of compound B

Figure S21: Second expanding of DEPT NMR spectrum of compound B

Figure S22: HMQC spectrum of compound B

Figure S23: HMBC spectrum of compound B

Figure S24: Expanded HMBC NMR spectrum of compound B

Figure S26: COSY spectrum of compound B

Figure S27: IR Spectra of compound C

Figure S28: +ESI-TOF-MS spectra of compound C. a) High resolution (HR) of the high molecular weight region; b) Low molecular weight region

Figure S29: proton NMR spectrum of compound C

Figure S30: First expanding of proton NMR spectrum of compound C

Figure S31: Second expanding of proton NMR spectrum of compound C

Figure S32: Third expanding of proton NMR spectrum of compound C

Figure S33: Fourth expanding of proton NMR spectrum of compound C

Figure S34: DEPT NMR spectrum of compound C

Figure S35: First expanding of DEPT NMR spectrum of compound C

Figure S36: HMQC spectrum of compound C

Figure S37: HMBC spectrum of compound C

Figure S38: Expanded HMBC spectrum of compound C

Figure S39: COSY spectrum of compound C

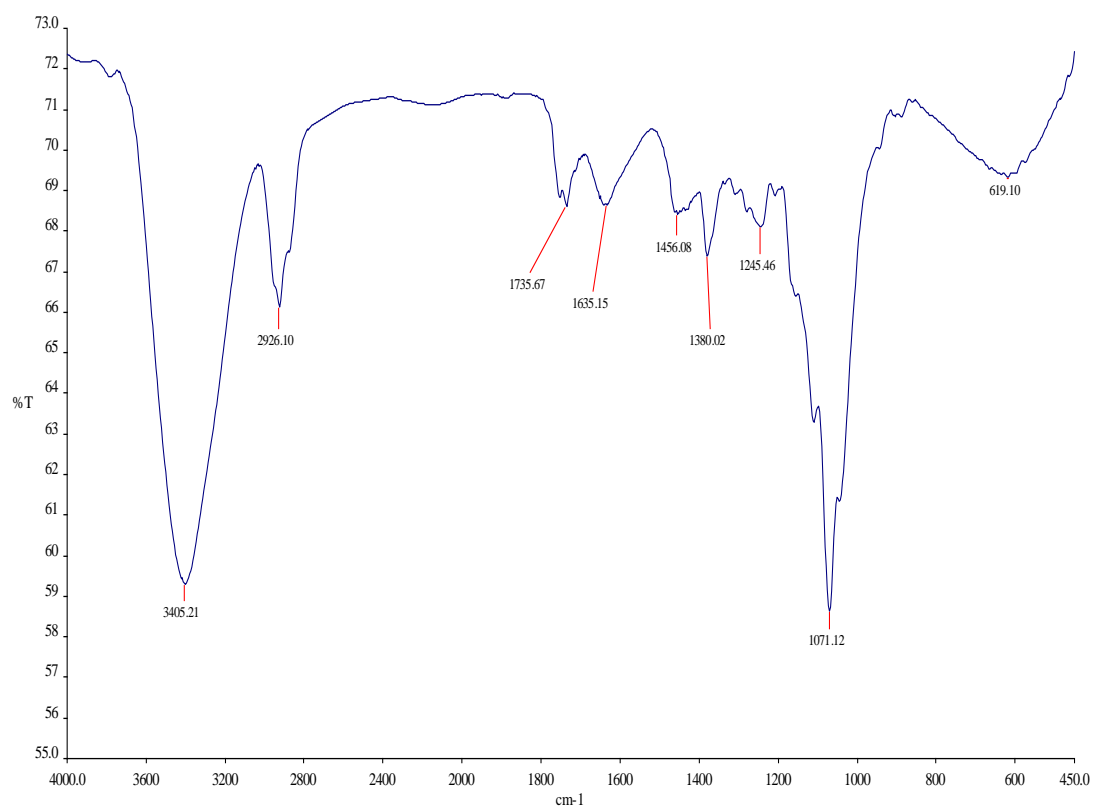


Figure S1: IR spectra of compound A

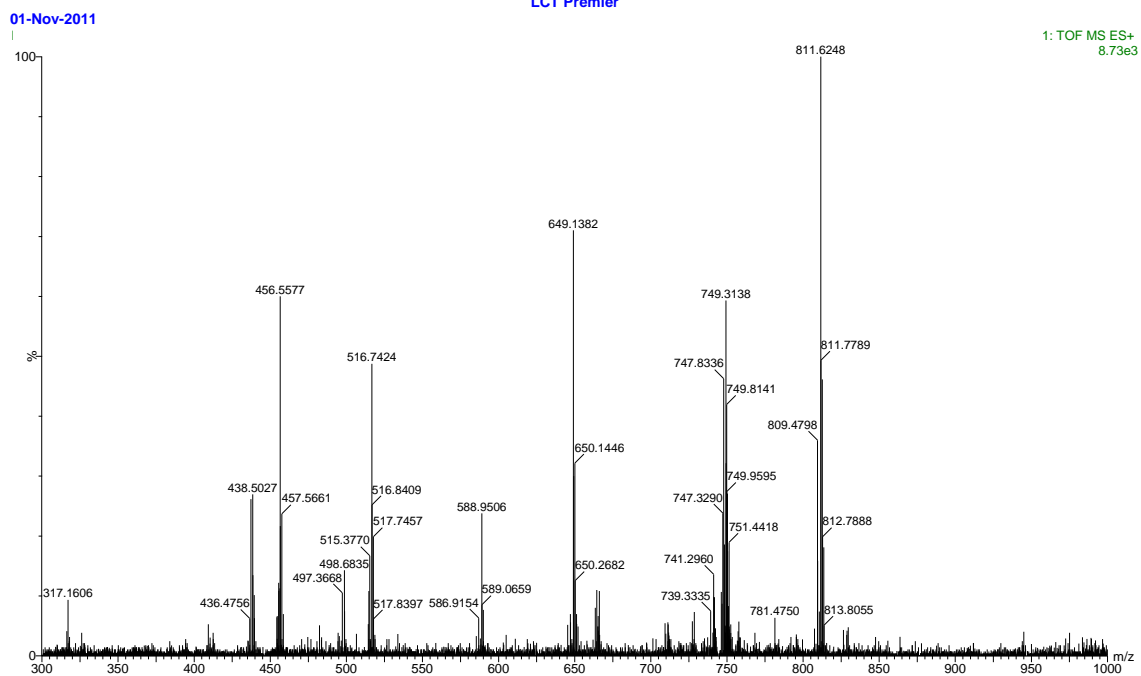
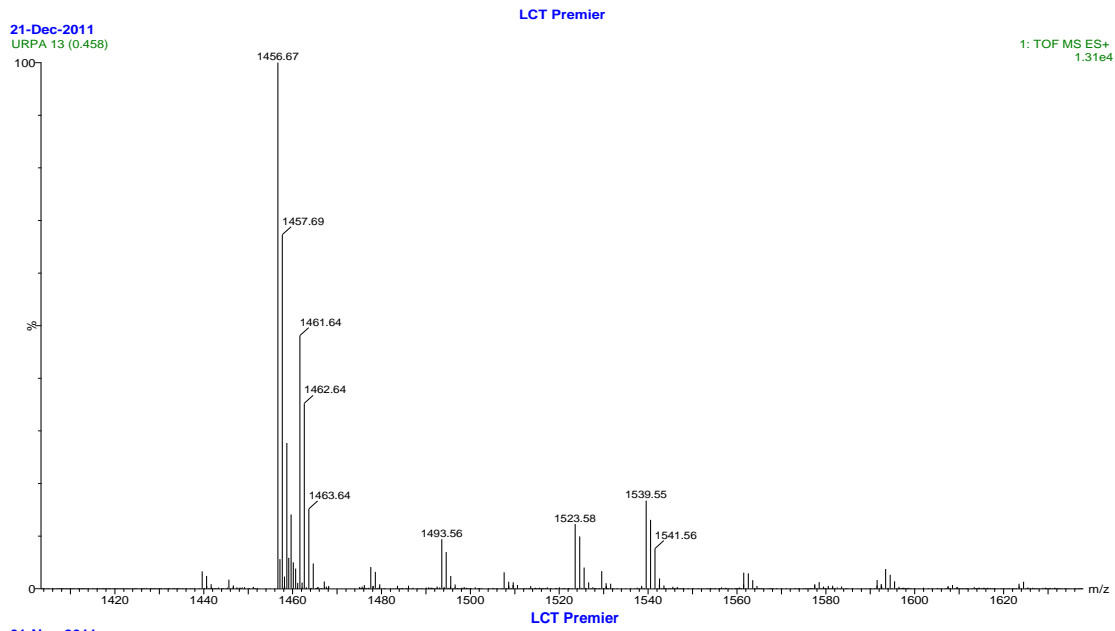


Figure S2: +ESI-TOF-MS spectra of compound A. a) High resolution of the high molecular weight region; b) Low molecular weight region



Current Data Parameters
 NAME UDA_A
 EXPNO 1
 PROCNO 2

F2 - Acquisition Parameters
 Date_ 20100727
 Time 13:03
 INSTRUM spect
 PROBD 5 mm BBI 1H/1D-
 PULPROG zg30
 TO 65534
 SOLVENT DMSO
 NS 16
 DS 2
 SWH 9223.895 Hz
 FIDRES 0.125403 Hz
 AQ 3.984887 sec
 RG 93.3
 DW 60.000 usec
 DE 4.00 usec
 TE 282.2 K
 D1 1.00000000 sec
 TDS 1

CHANNEL f1

MDEL 1H
 P1 7.00 usec
 PL1 -2.00 dB
 SFO1 400.1324710 MHz

F2 - Processing parameters
 SI 32768
 SF 400.1300000 MHz
 WDW EM
 SSB 0
 LB 0.30 Hz
 GB 0
 PC 1.00

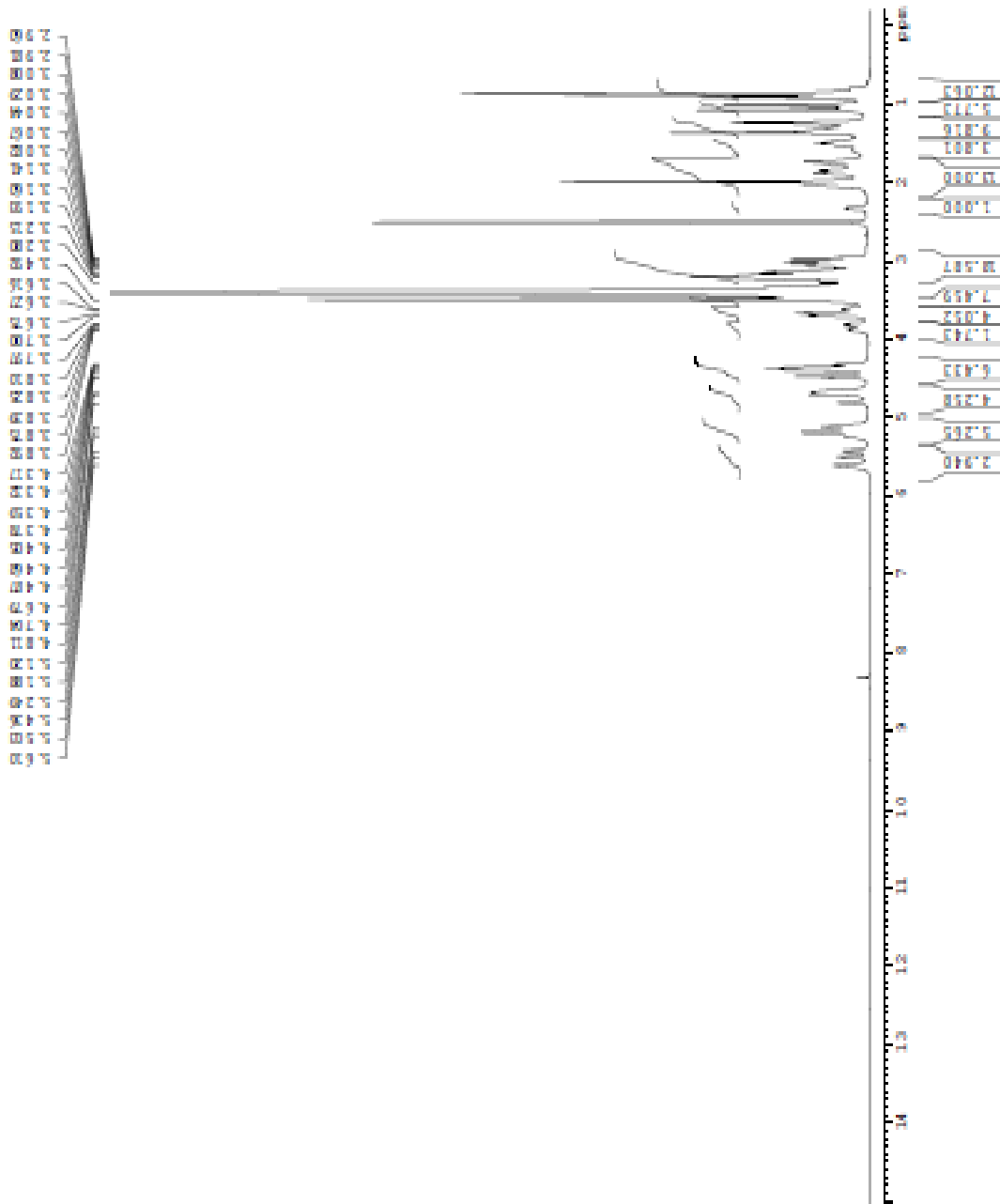
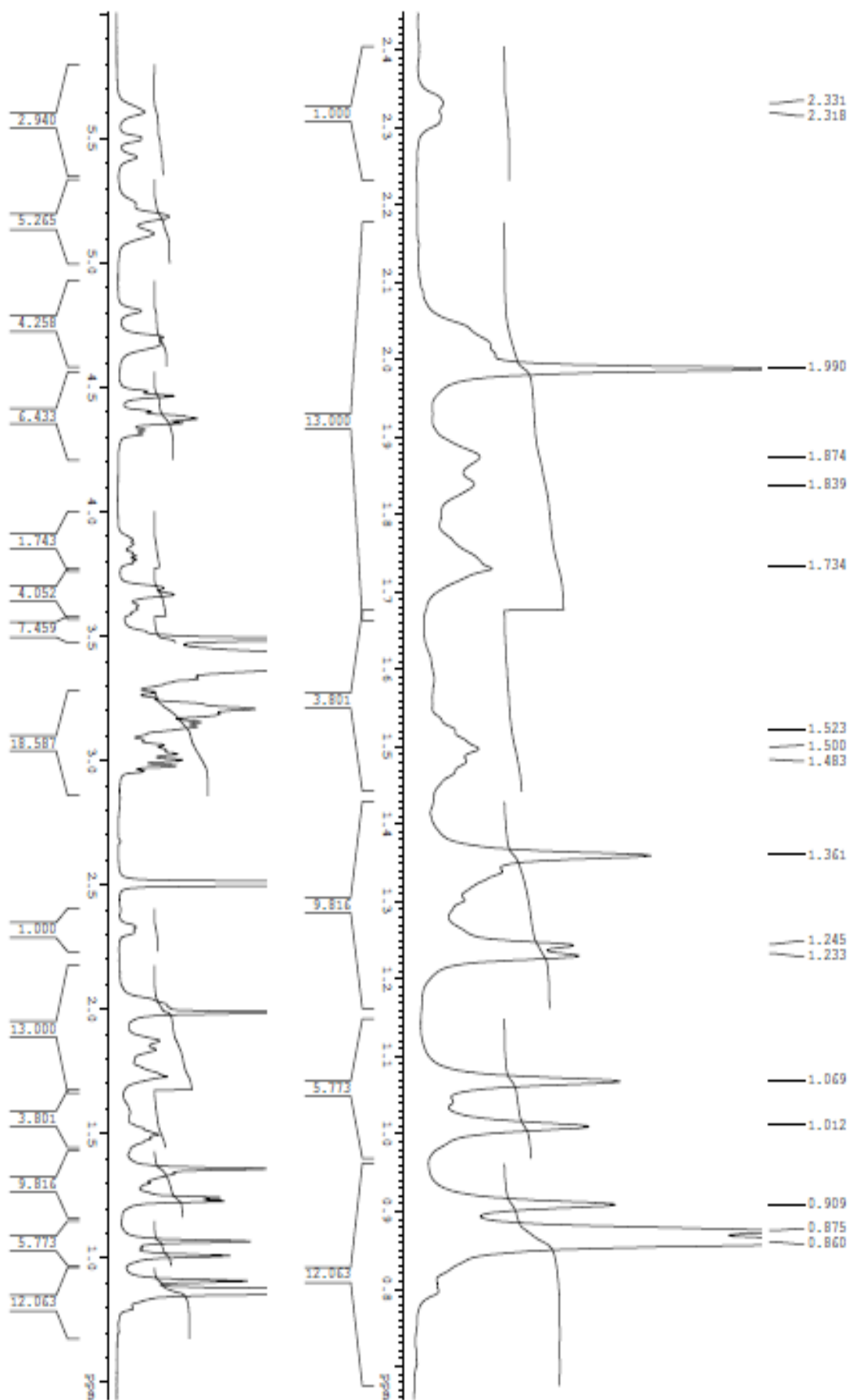


Figure S3: Proton NMR Spectrum OF Compound A



S4: First expanding of proton NMR spectrum of compound A

Figure

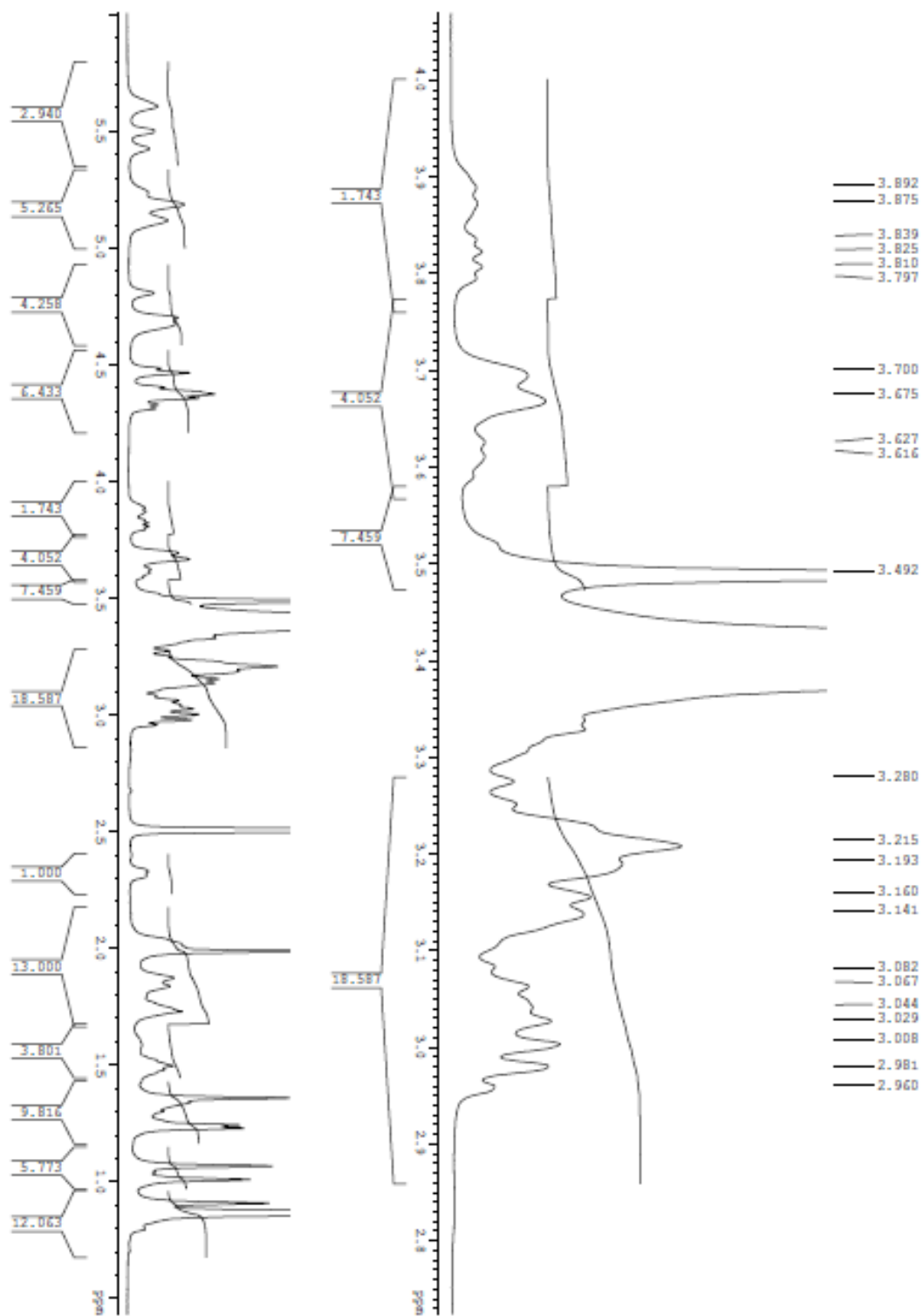


Figure S5: Second expanding of proton NMR spectrum of compound A

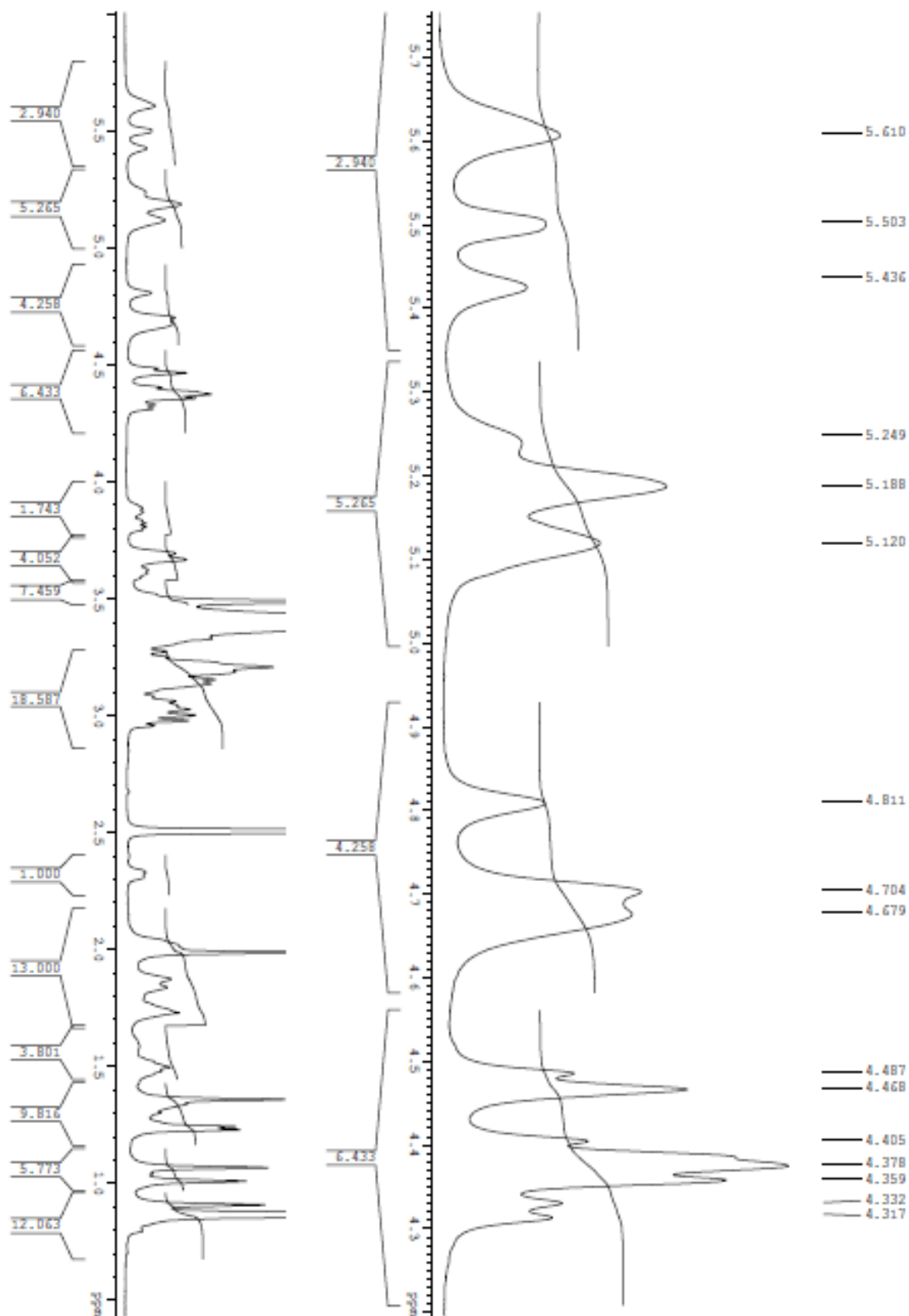


Figure S6: Third expanding of proton NMR spectrum of compound A

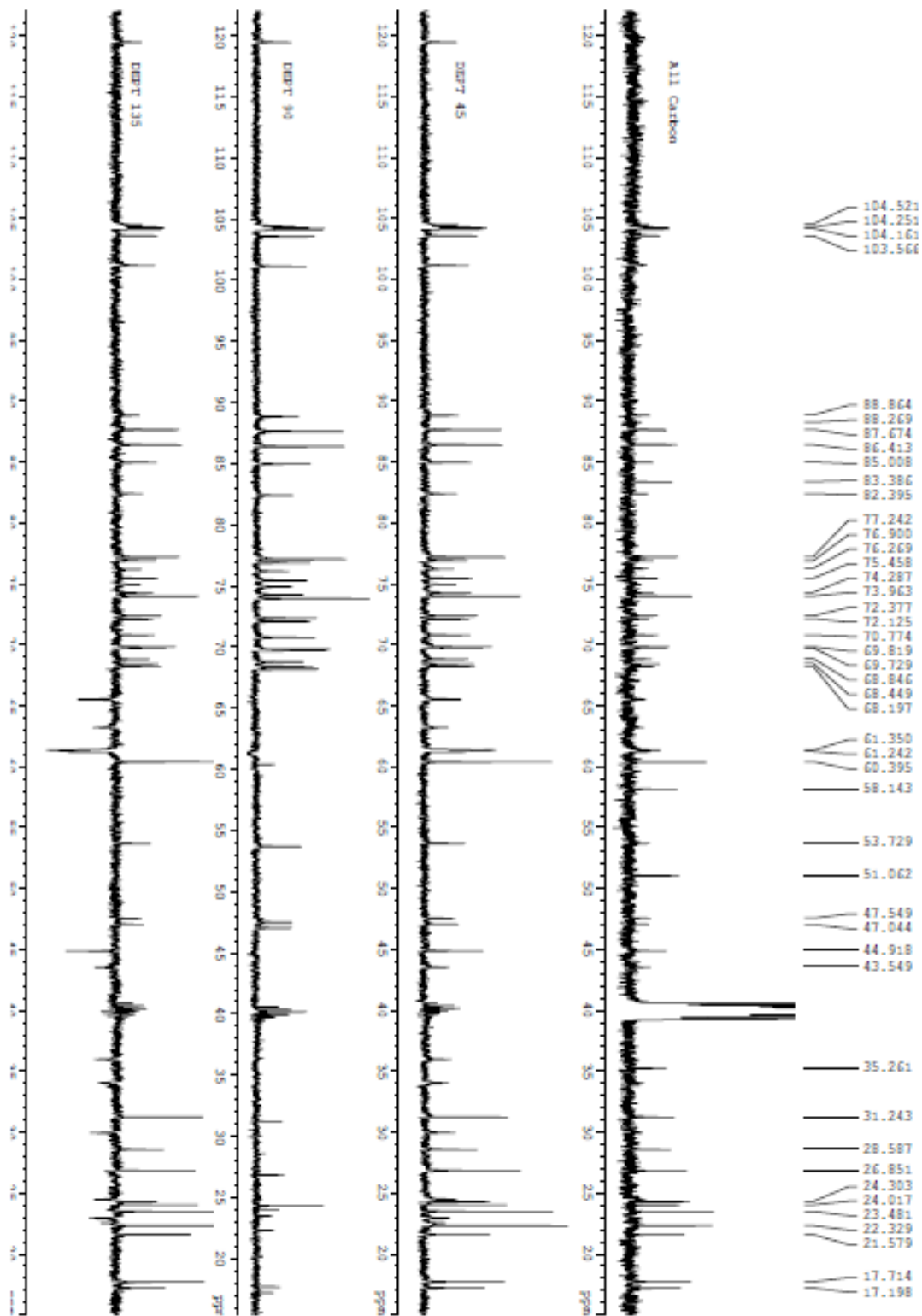


Figure S7: DEPT NMR spectrum of compound A

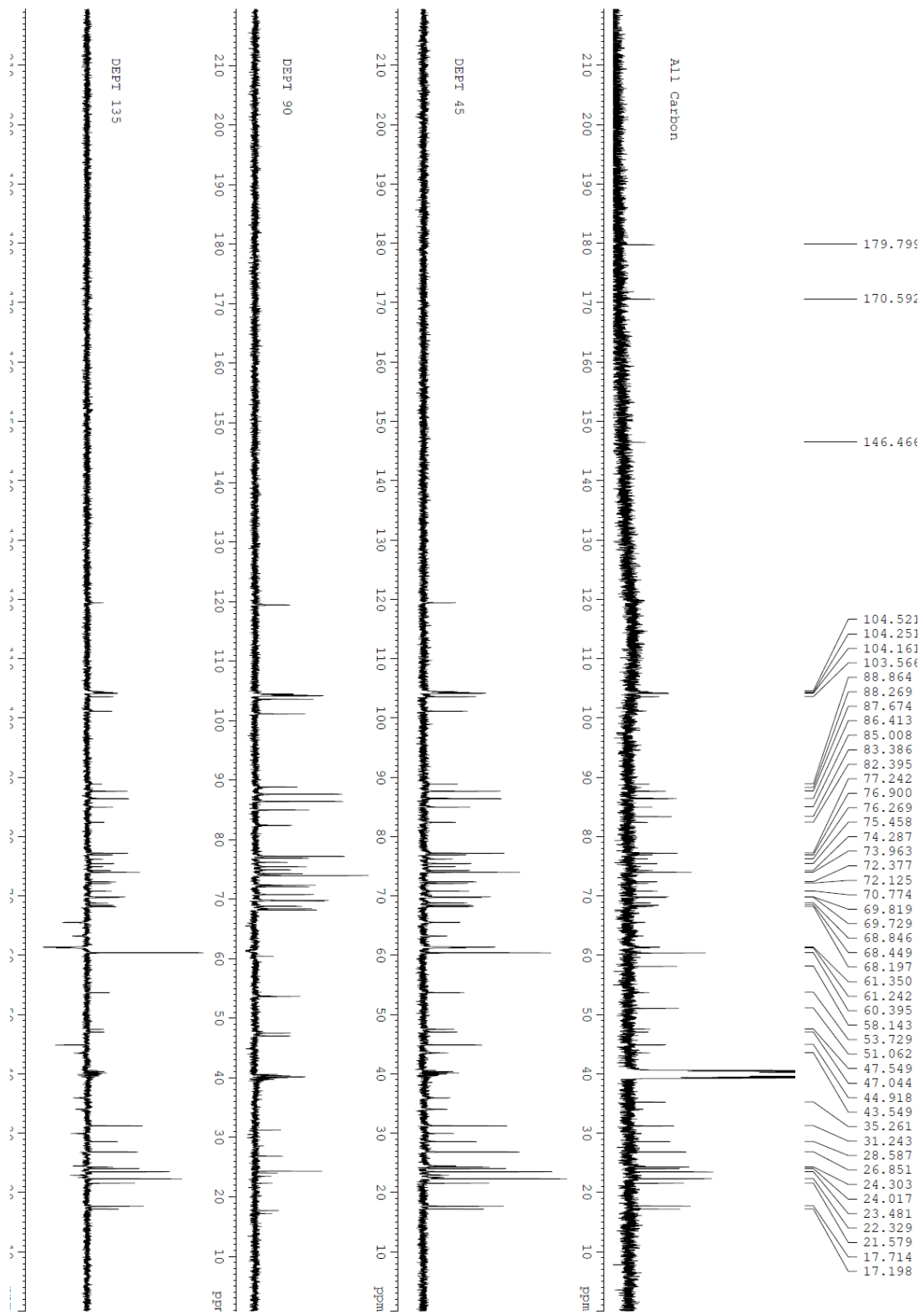


Figure S8: Expanded DEPT NMR spectrum of compound A

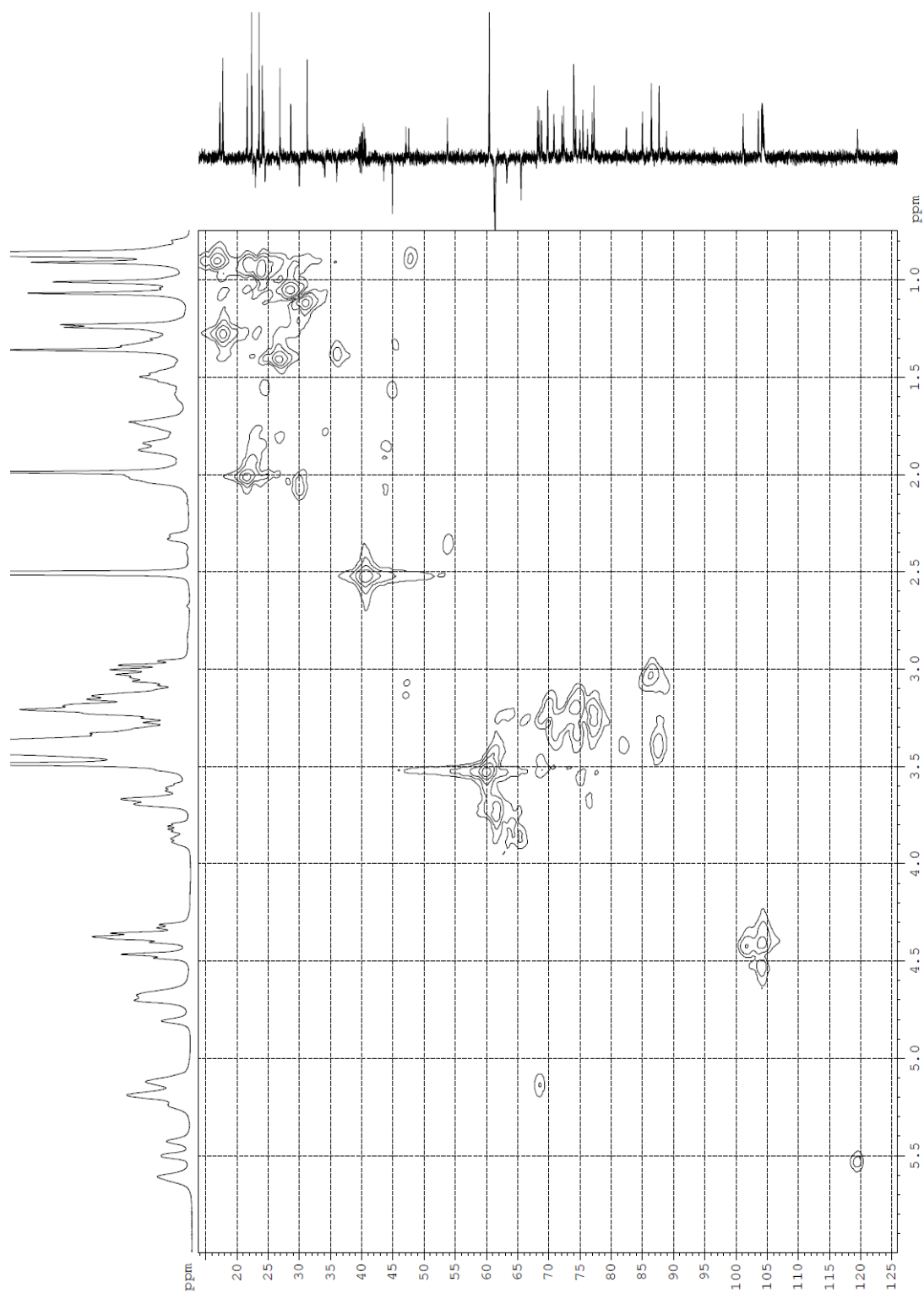


Figure S9: HMQC spectrum of compound A

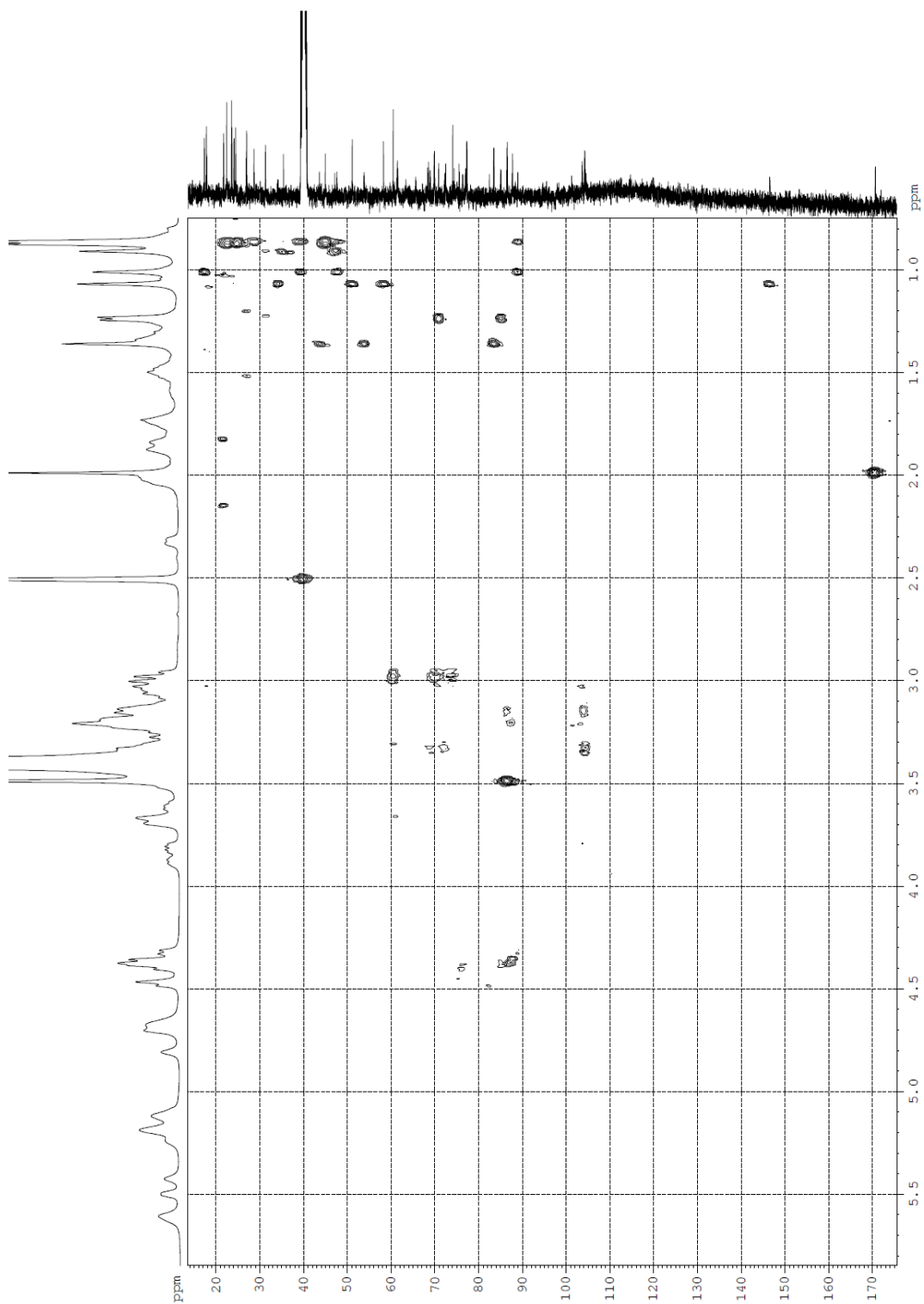


Figure S10: HMBC spectrum of compound A

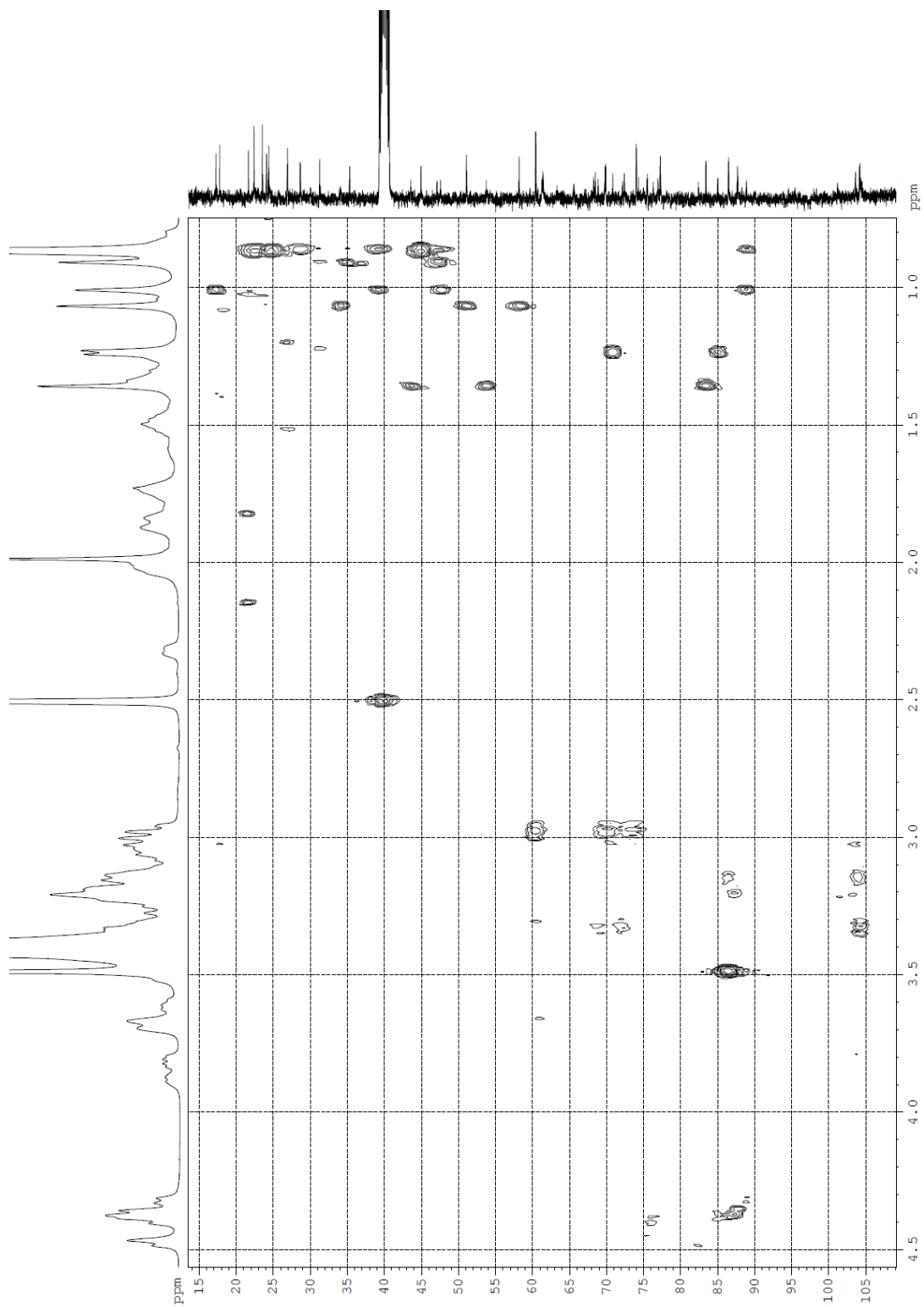


Figure S11: Expanded HMBC spectrum of compound A

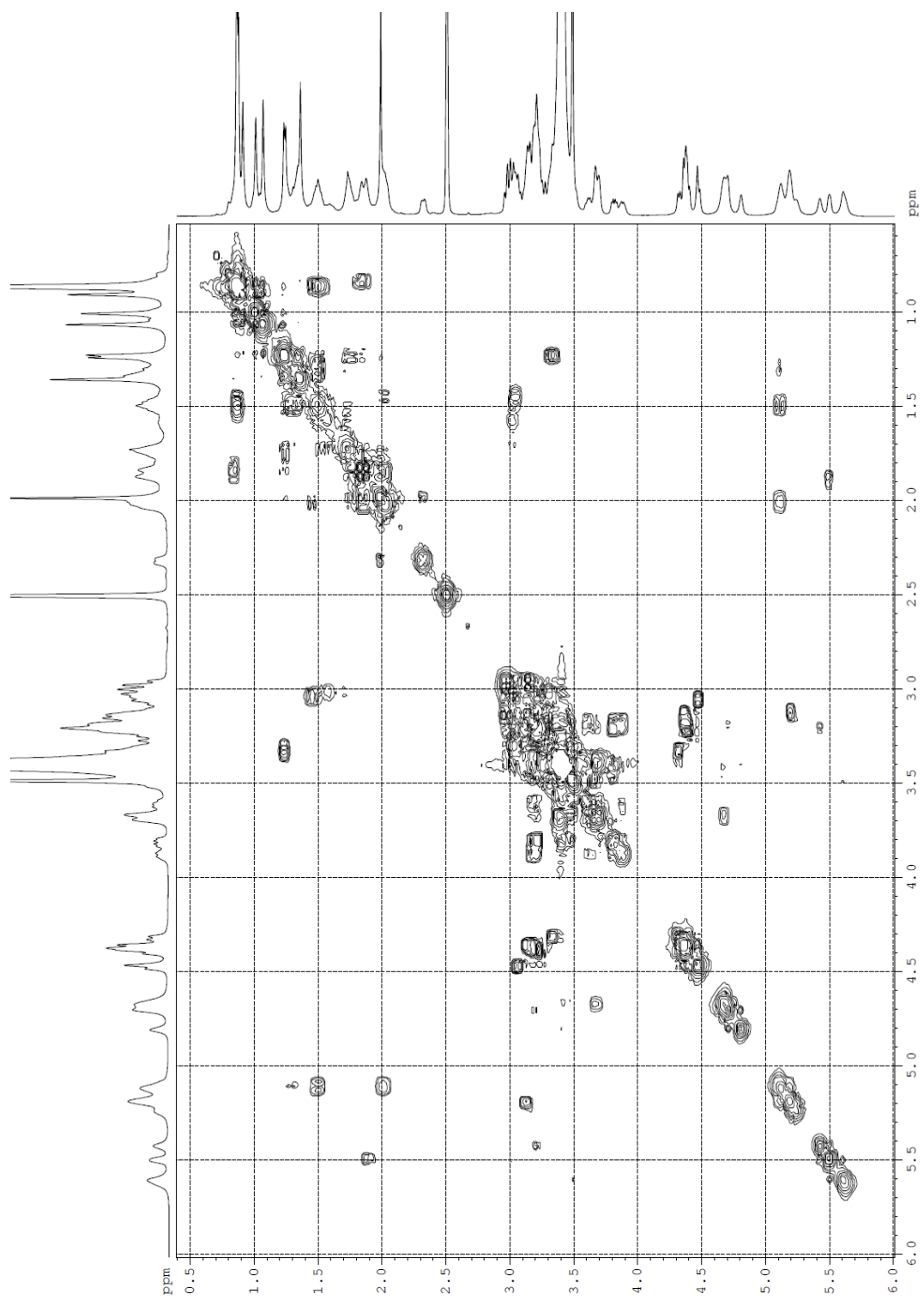


Figure S12: COSY spectrum of compound A

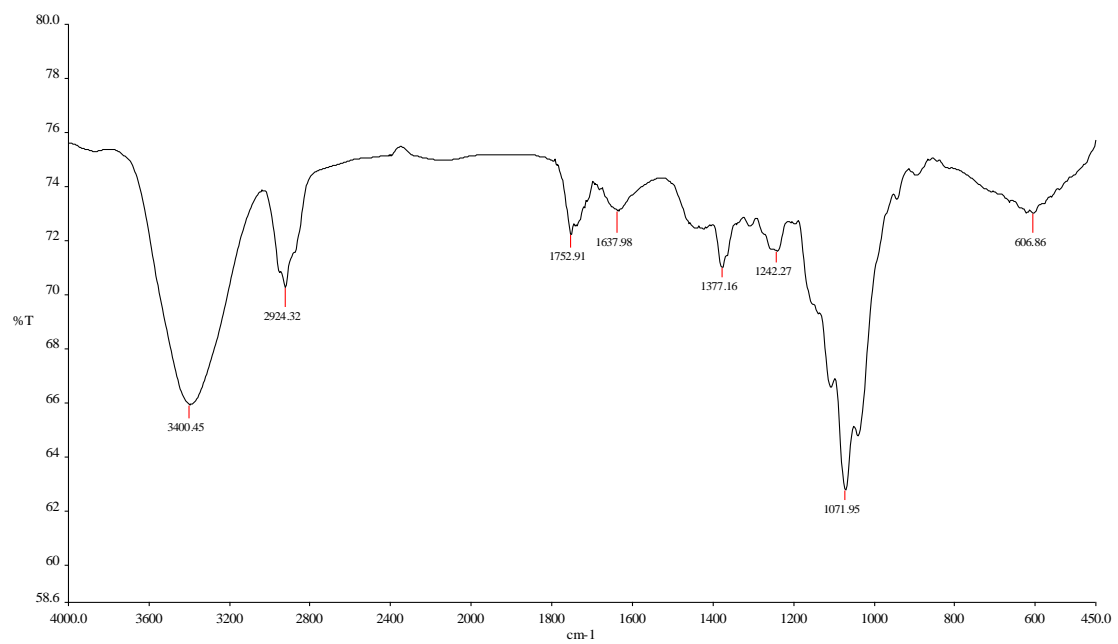


Figure S13: IR Spectra of compound B

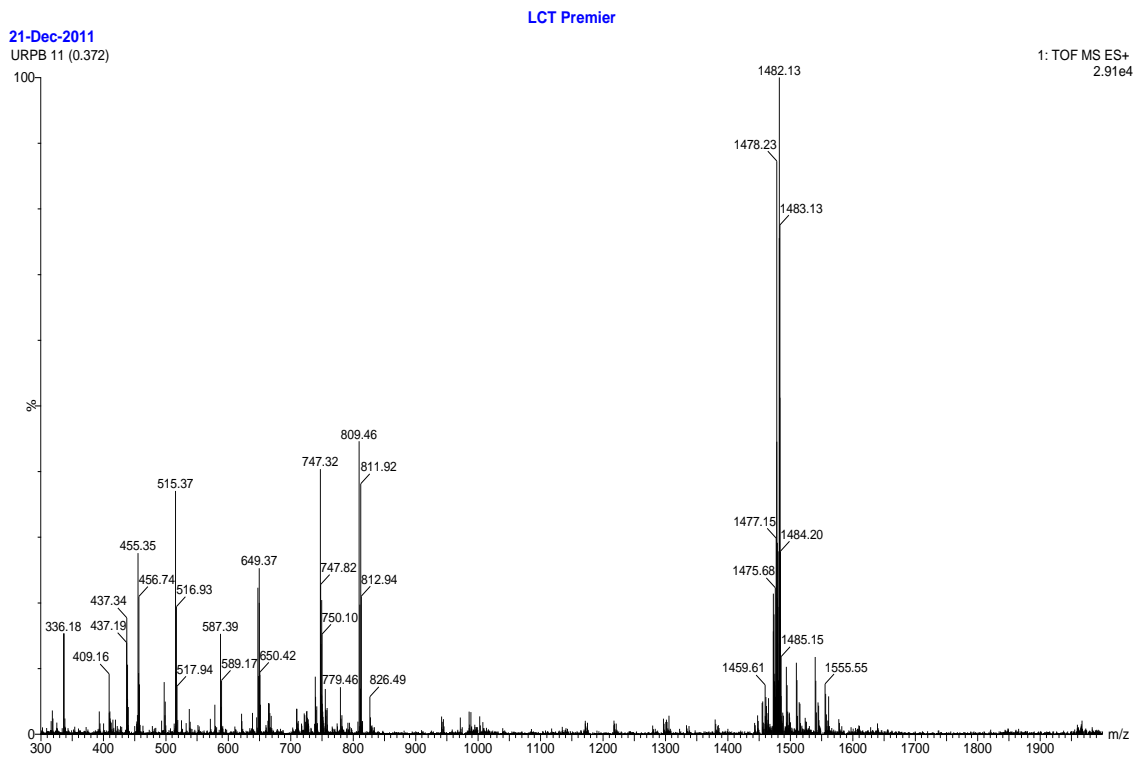
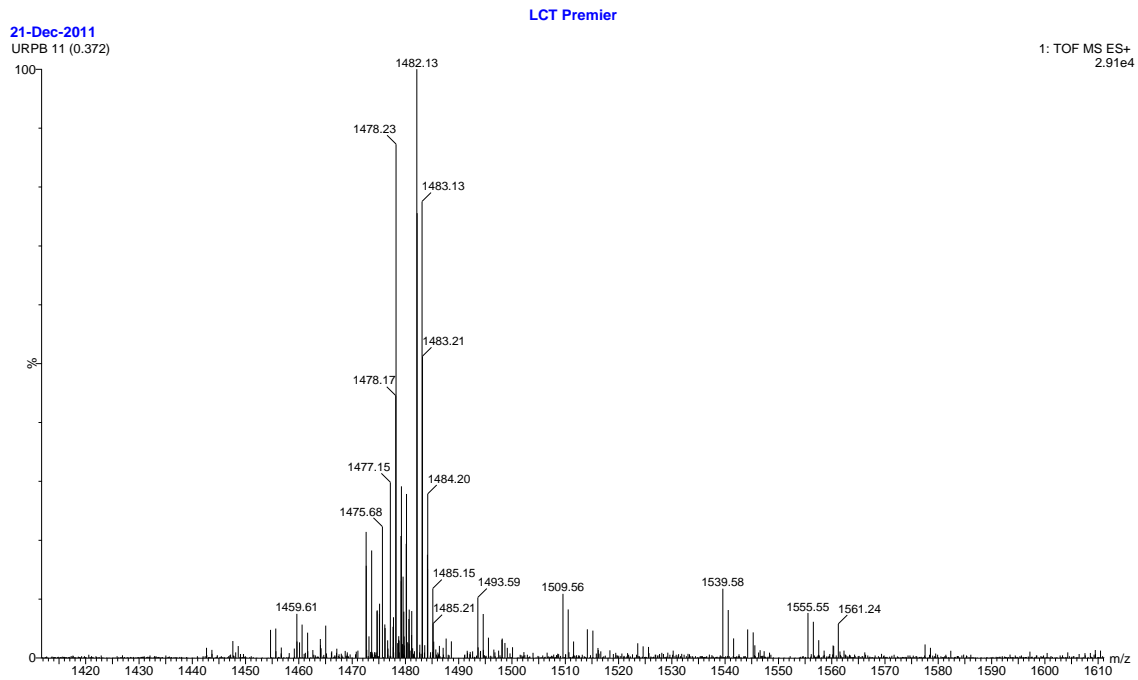


Figure 14: +ESI-TOF-MS spectra of compound B. a) High resolution (HR) of the high molecular weight region; b) Low molecular weight region



```
Current Data Parameters
NAME          UTA_B
EXPNO        1
PROCNO       1

F2 - Acquisition Parameters
Date_        20100728
Time         18.22
INSTRUM      spect
PROBHD       5 mm BBI 1H/D-
PULPROG      zg30
TD           65536
SOLVENT      DMSO
NS           128
DS           2
SWH          8223.685 Hz
FIDRES       0.125483 Hz
AQ           3.9846387 sec
RG           71.8
DW           60.800 usec
DE           6.00 usec
TE           292.8 K
D1           1.00000000 sec
TD0          1

===== CHANNEL f1 =====
NUC1         1H
P1           7.65 usec
PL1         -2.00 dB
SF01        400.1324710 MHz

F2 - Processing parameters
SI          32768
SF          400.1300000 MHz
WDW         EM
SSB         0
LB          0.30 Hz
GB          0
PC          1.00
```

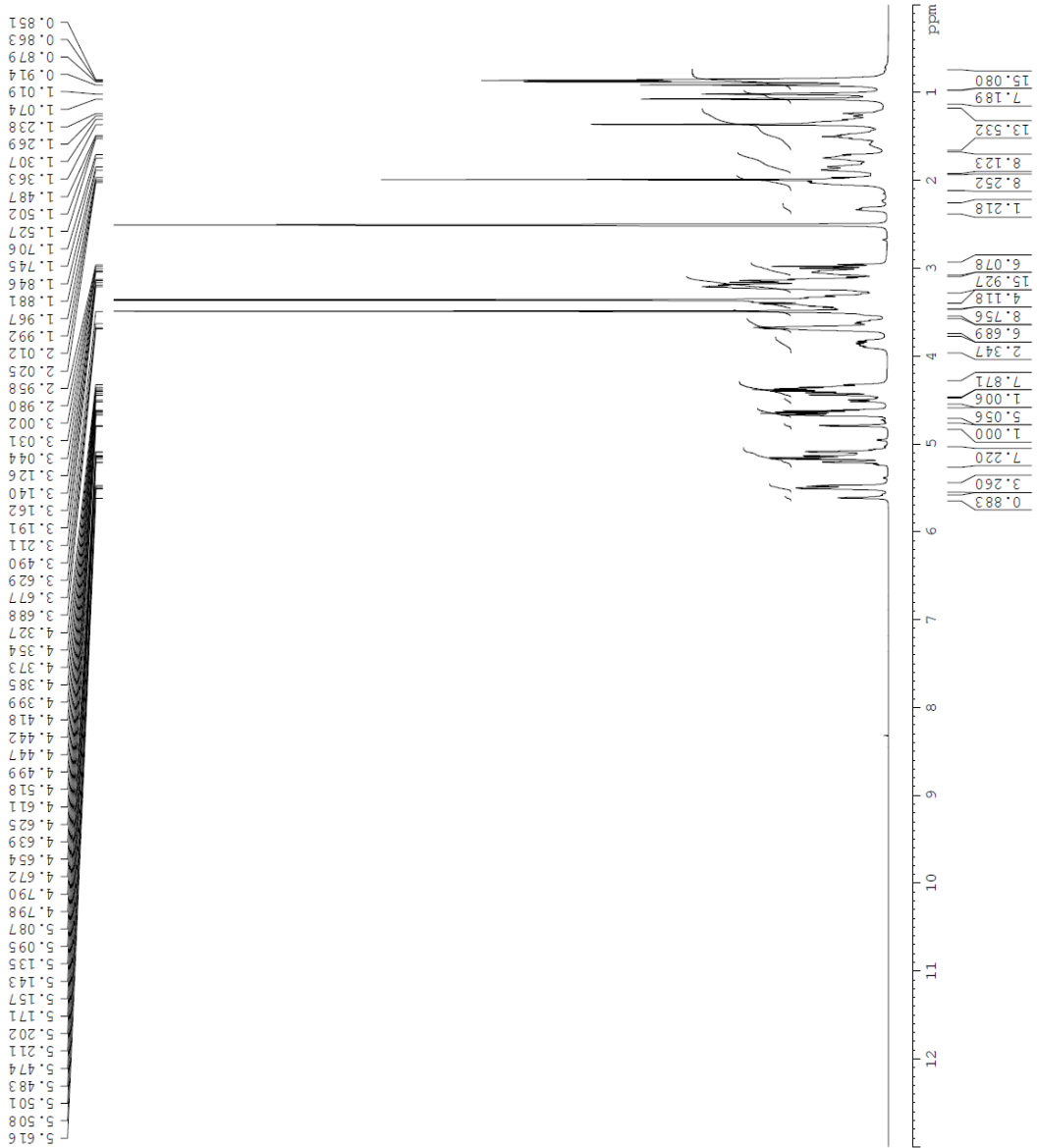


Figure S15: Proton NMR spectrum of compound B

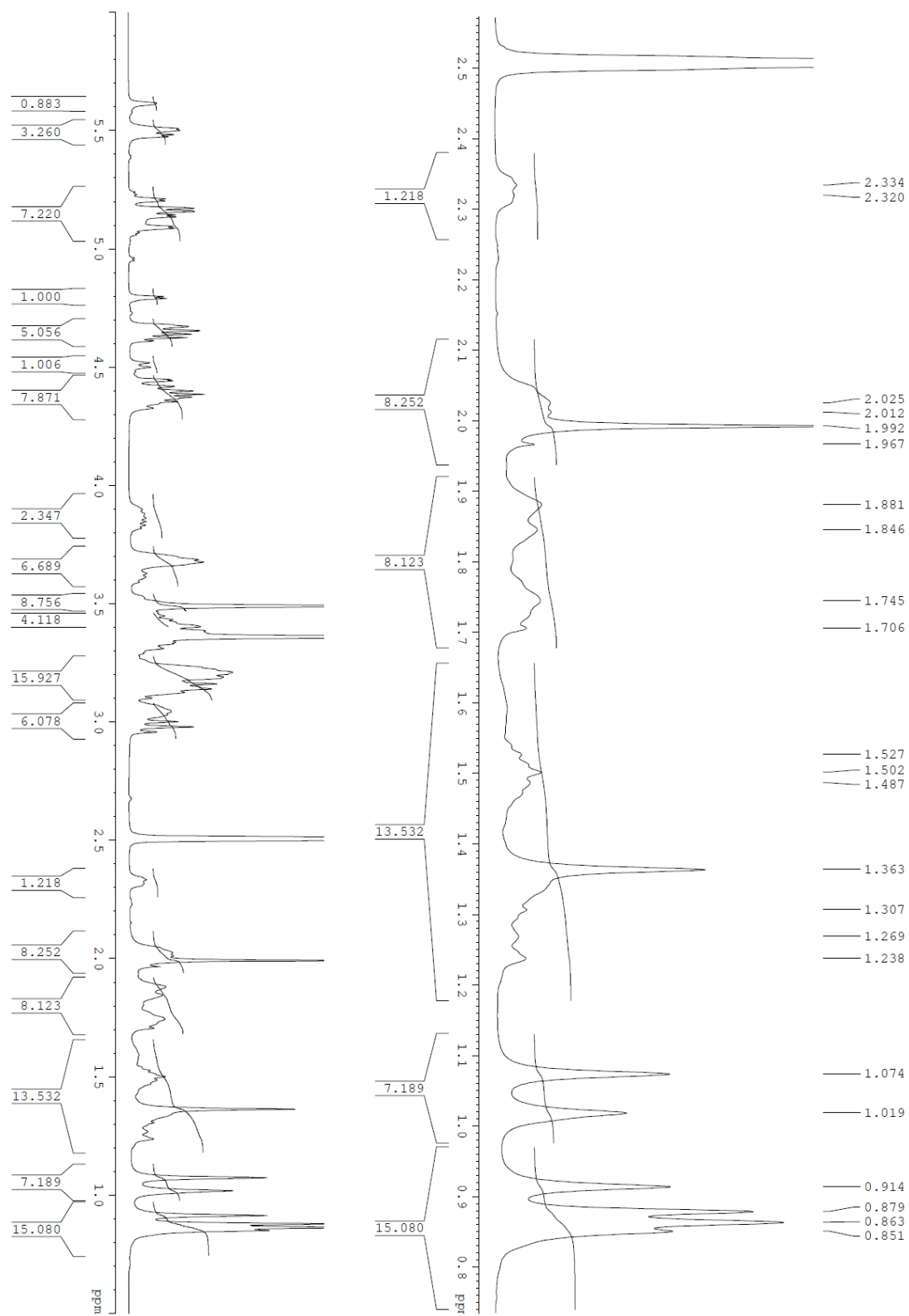


Figure S16: First expanding of proton NMR spectrum of compound B

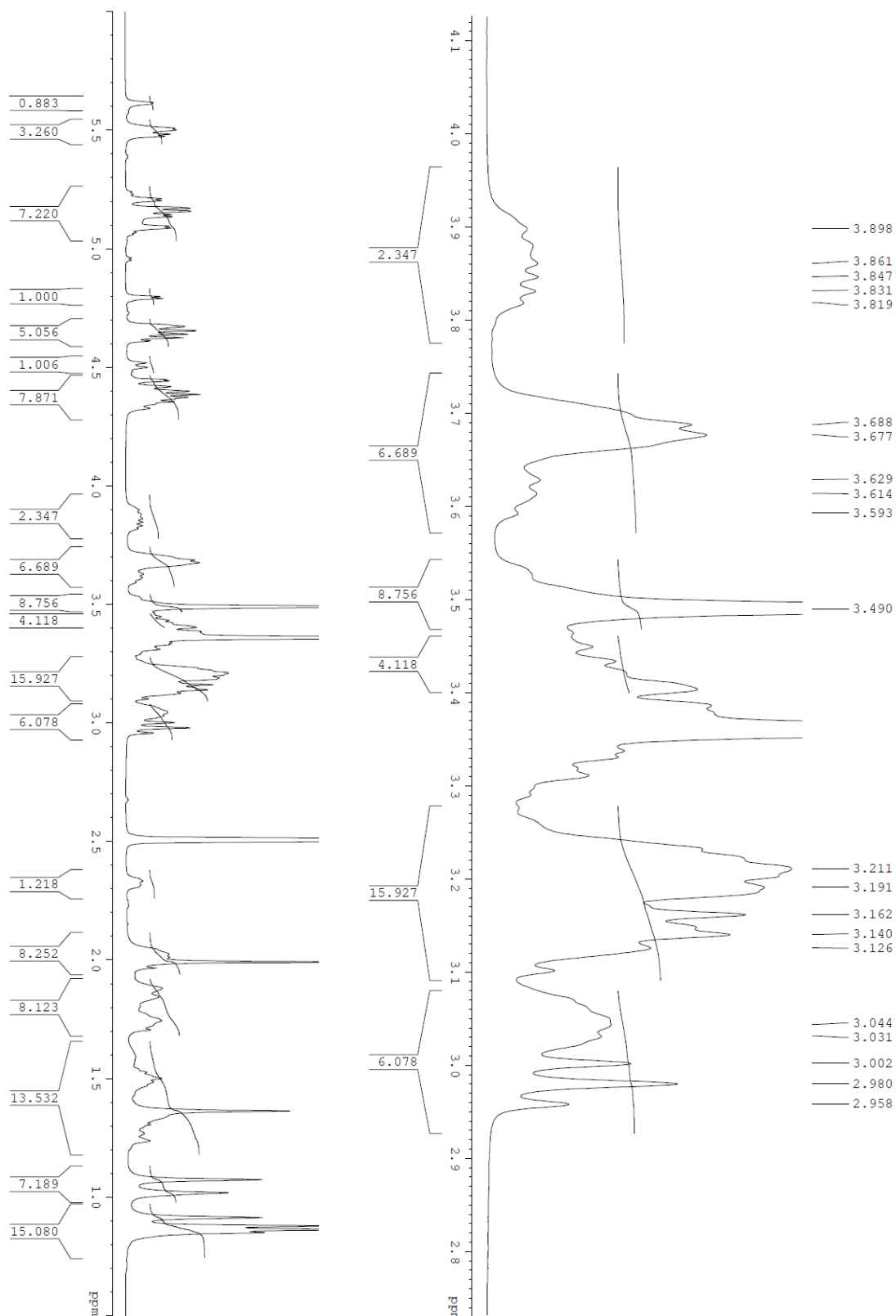


Figure S17: Second expanding of proton NMR spectrum of compound B

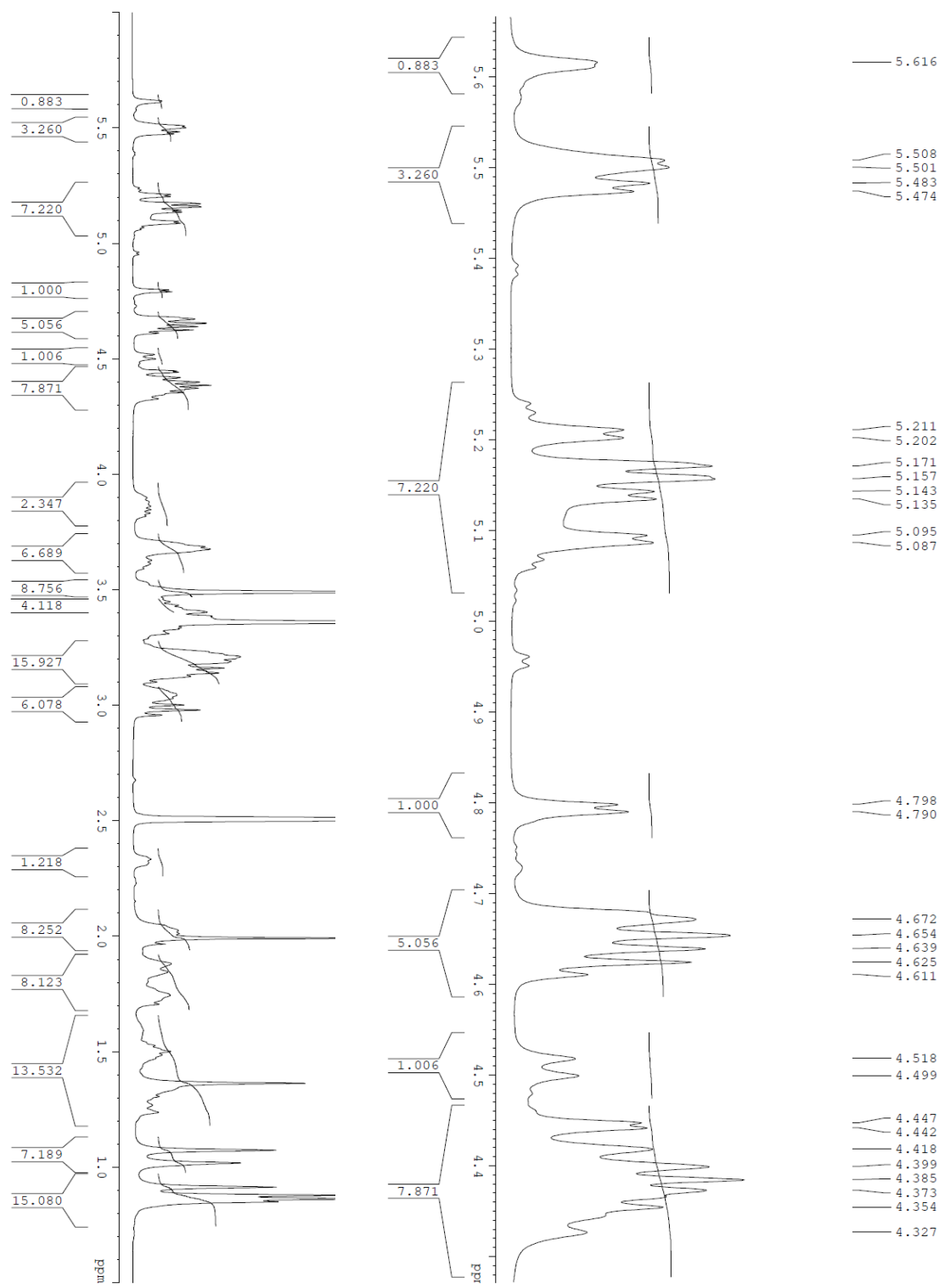


Figure S18: Third expanding of proton NMR spectrum of compound B

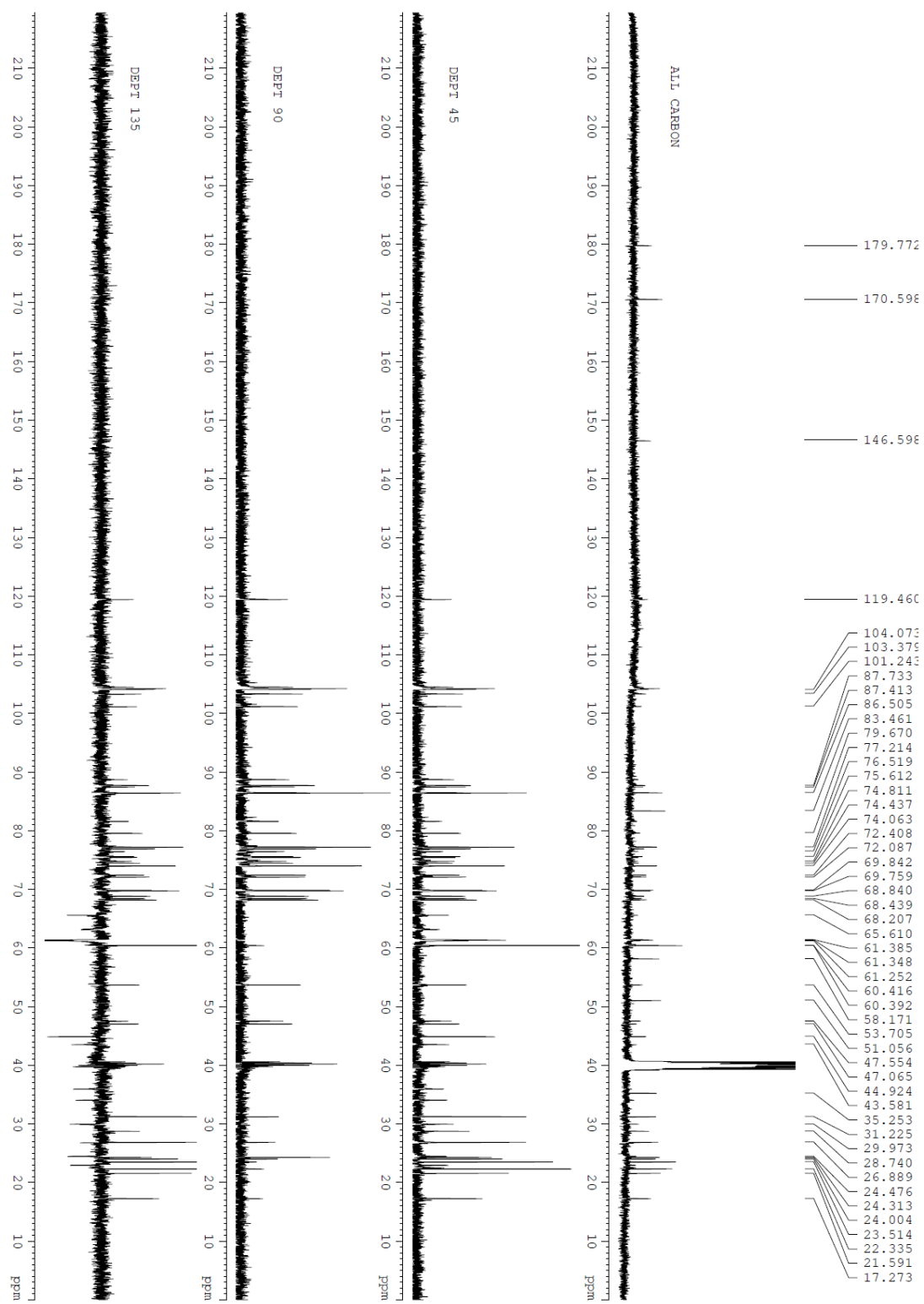


Figure S19: DEPT NMR spectrum of compound B

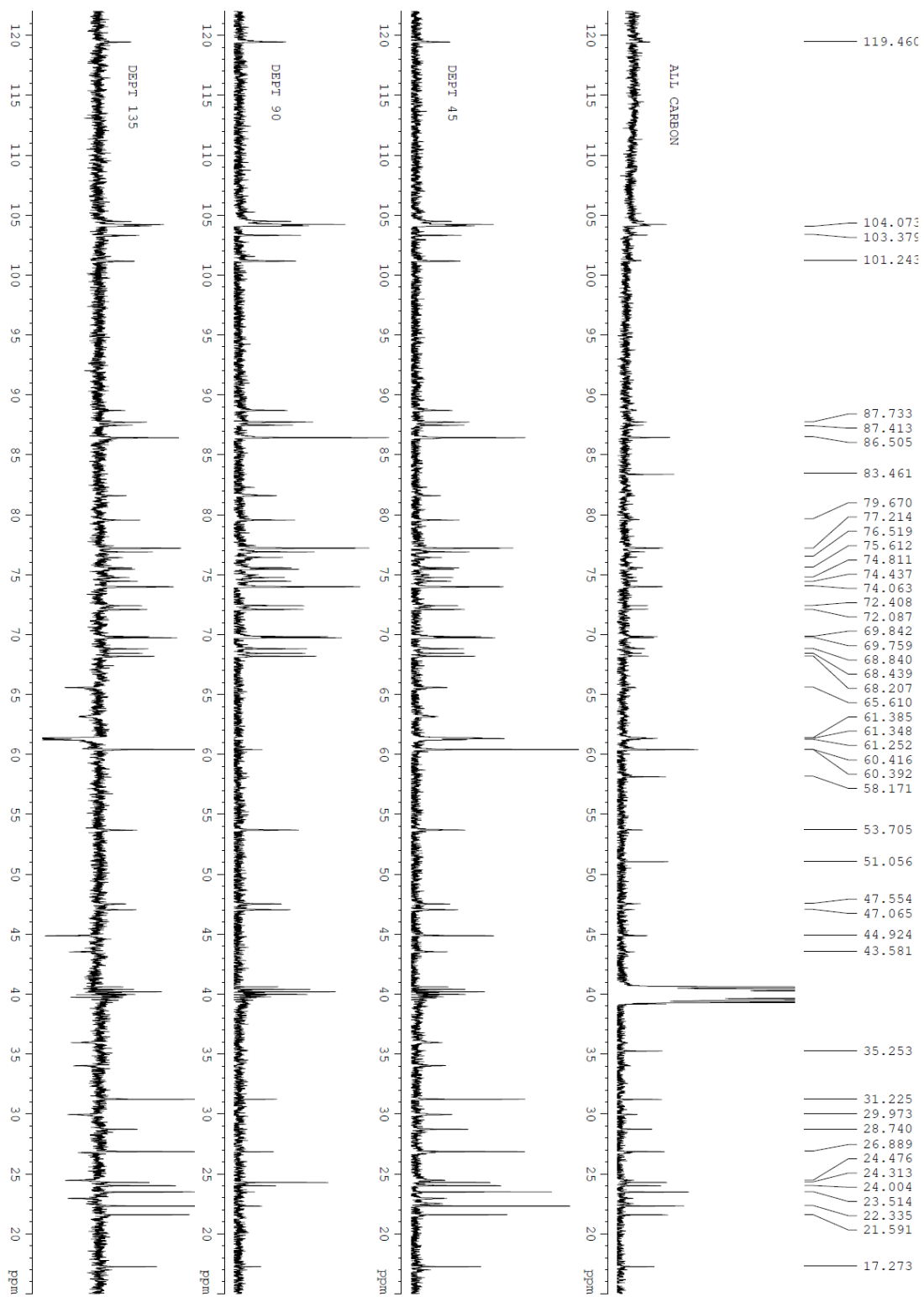


Figure S20: First expanding of dept NMR spectrum of compound B

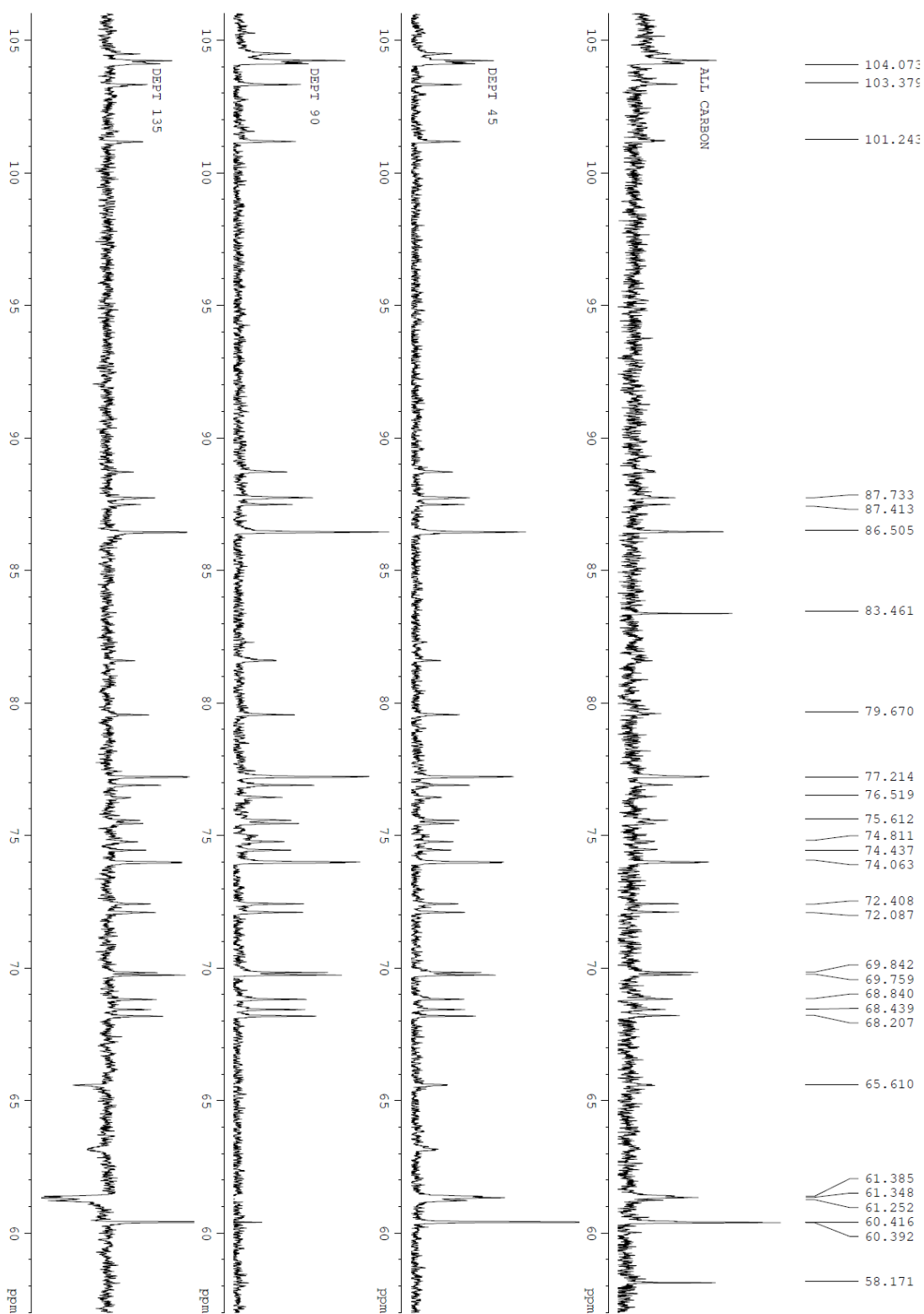


Figure S21: Second expanding of DEPT NMR spectrum of compound B

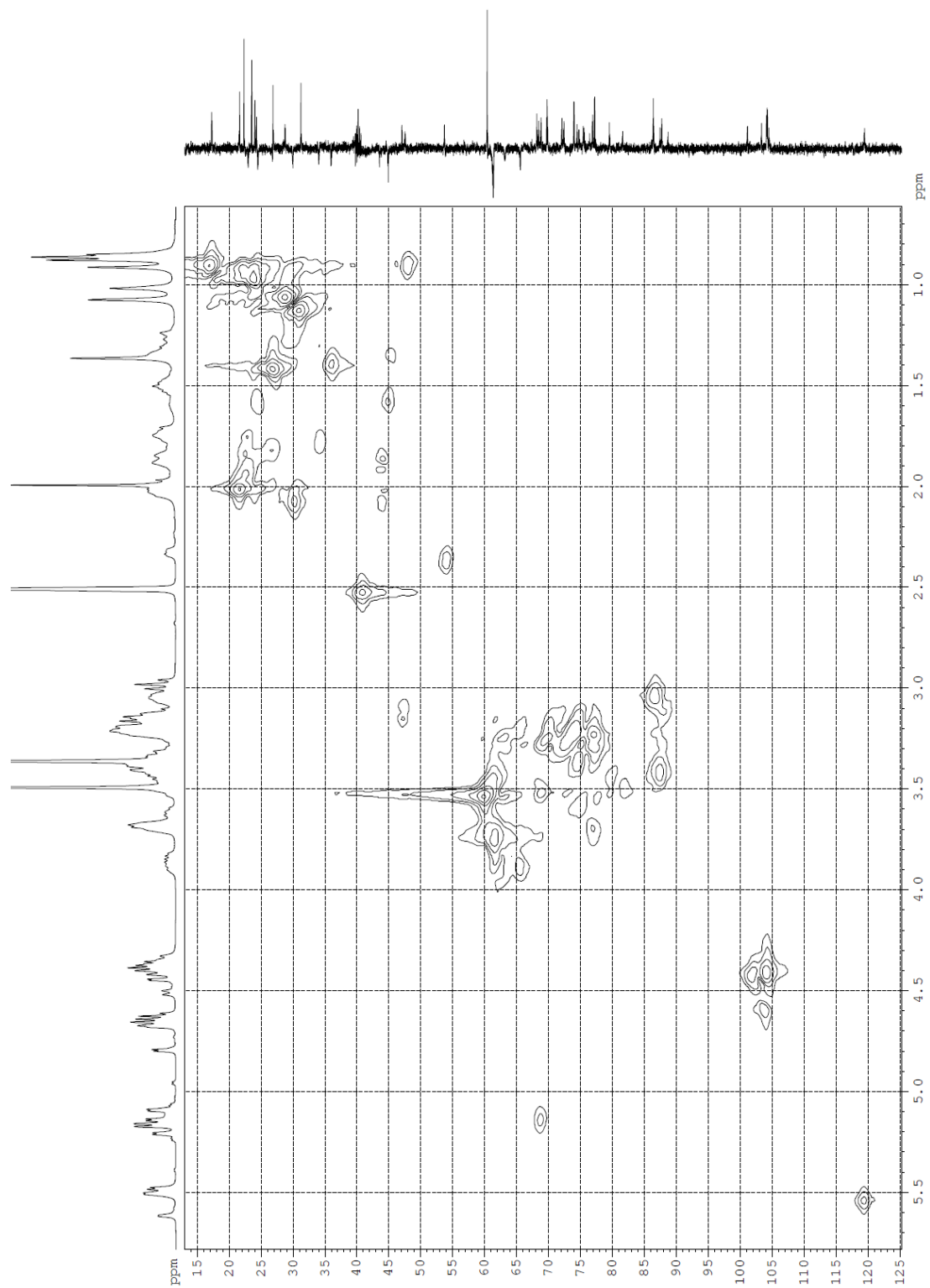


Figure S22: HMQC spectrum of compound B

HMBCGP

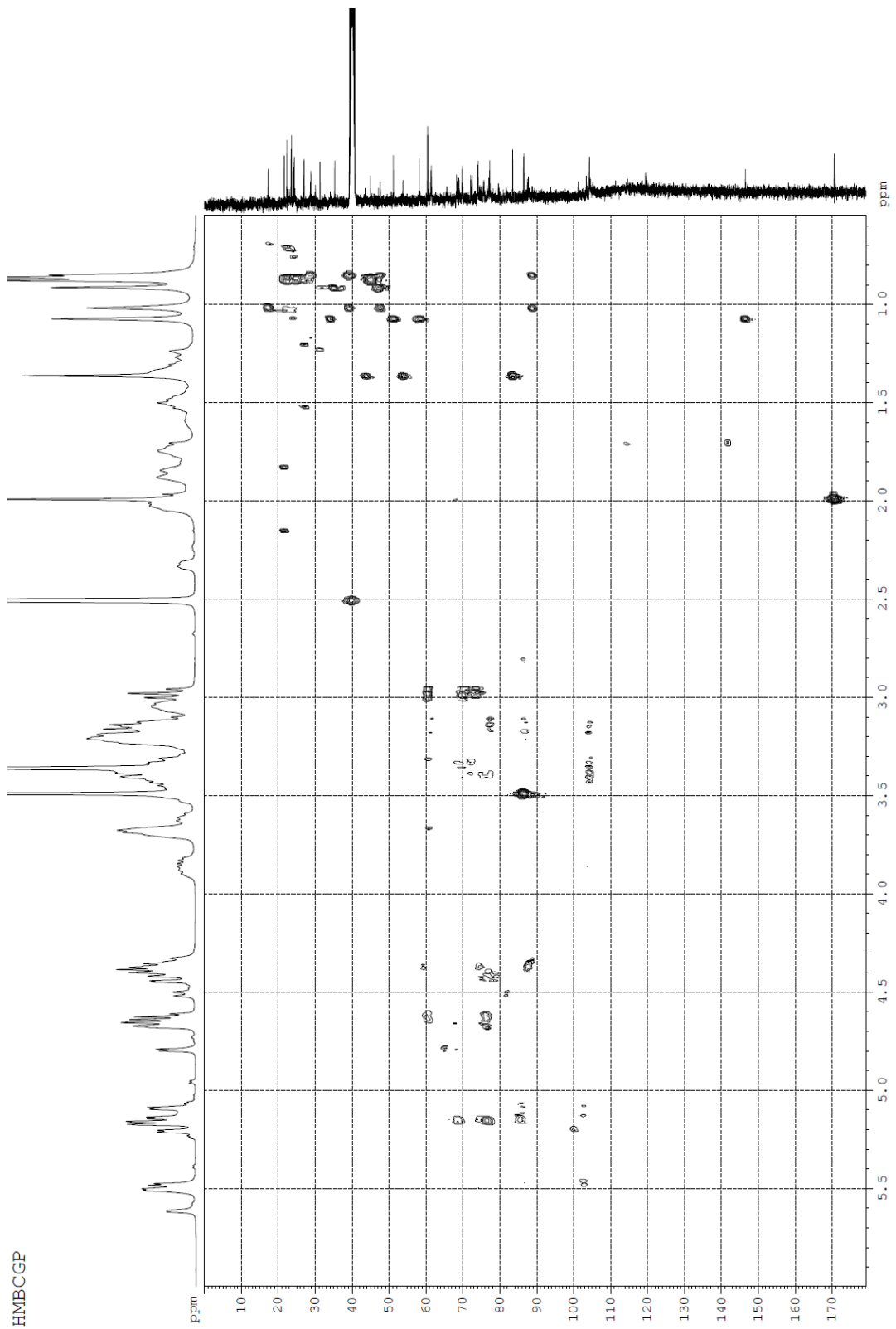


Figure S23: HMBC spectrum of compound B

HMBCGP

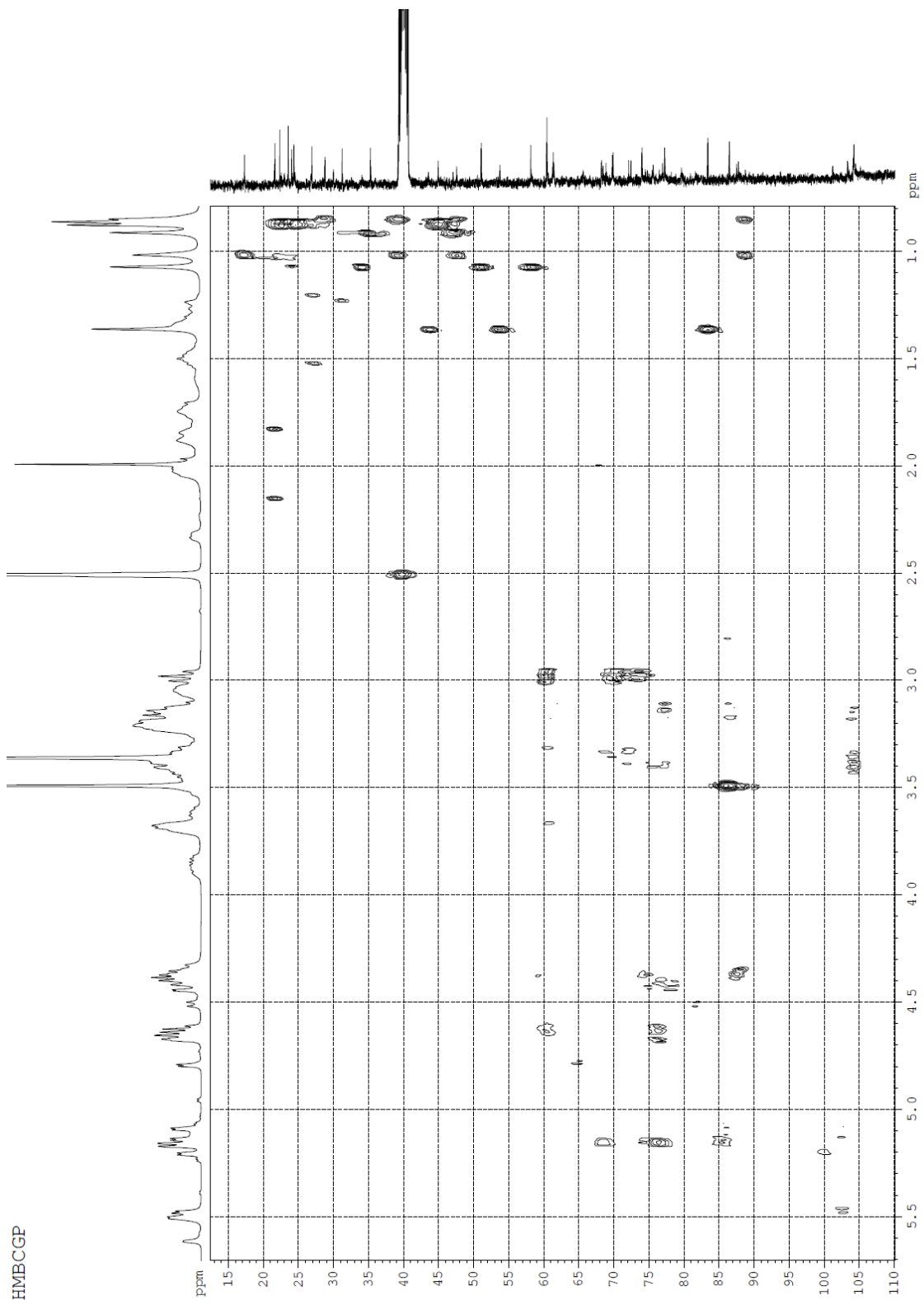


Figure S24: Expanded HMBC NMR spectrum of compound B

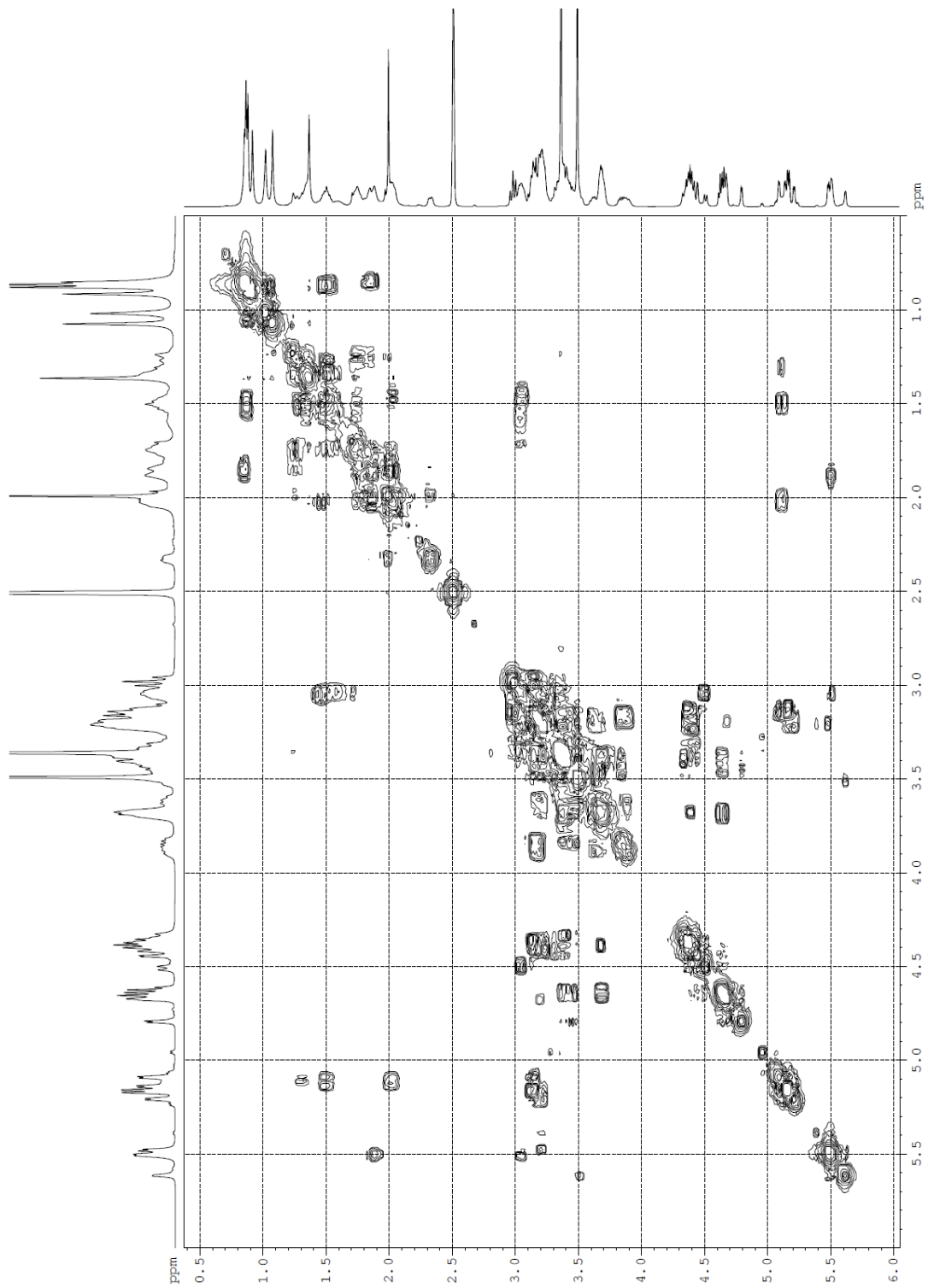


Figure S26: COSY spectrum of compound B

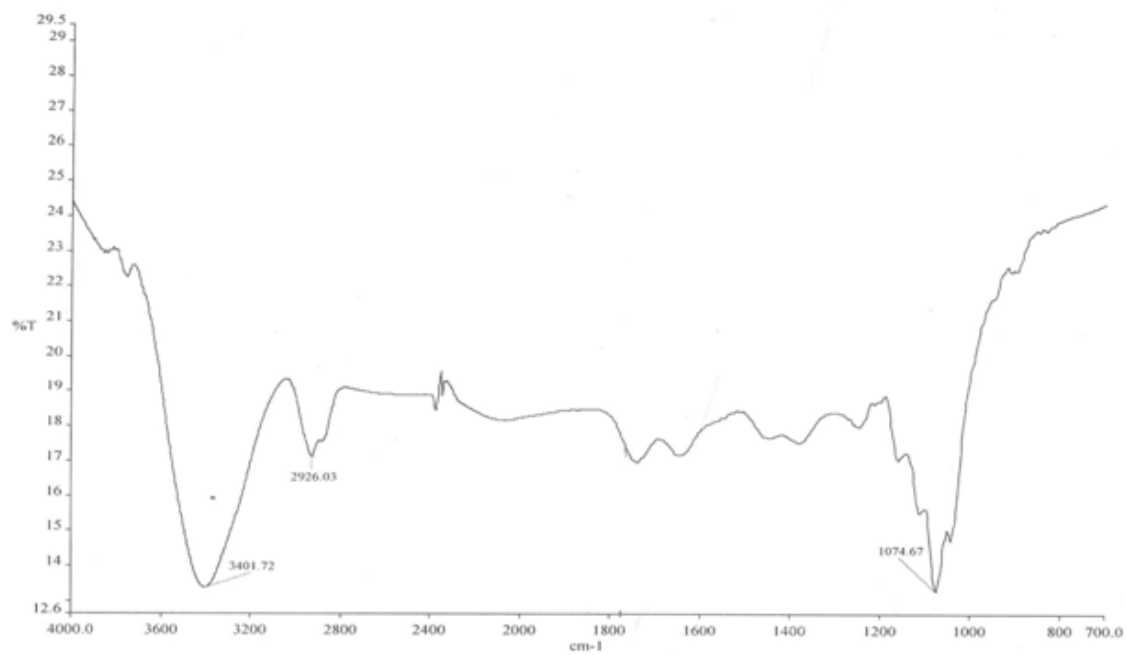


Figure S27: IR Spectra of compound C

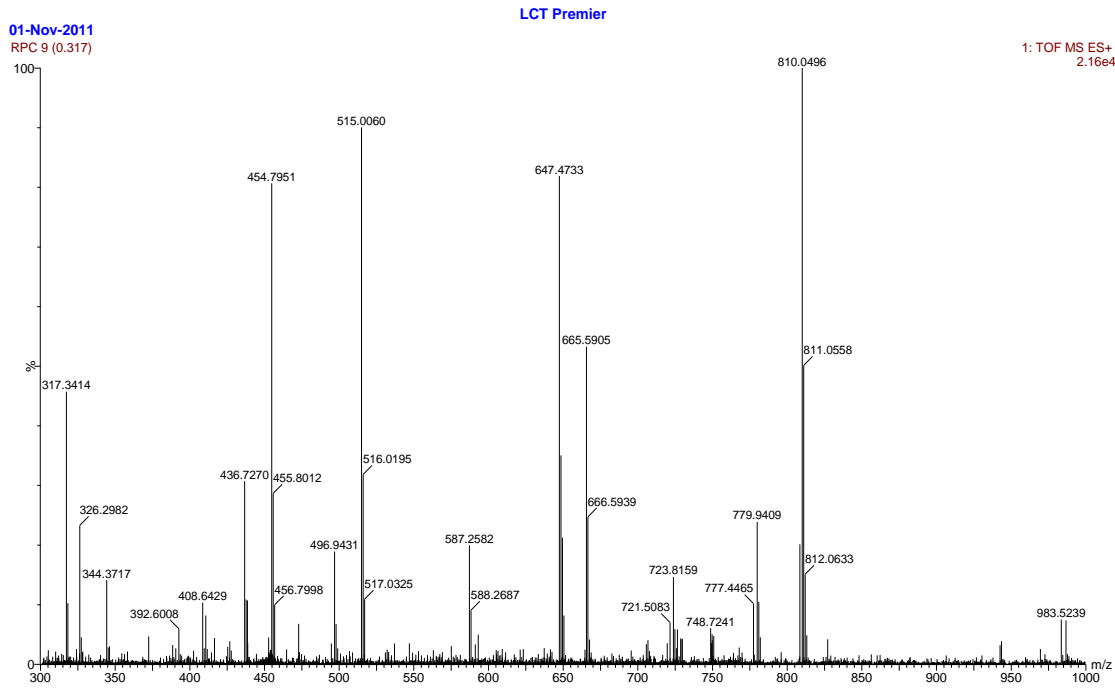
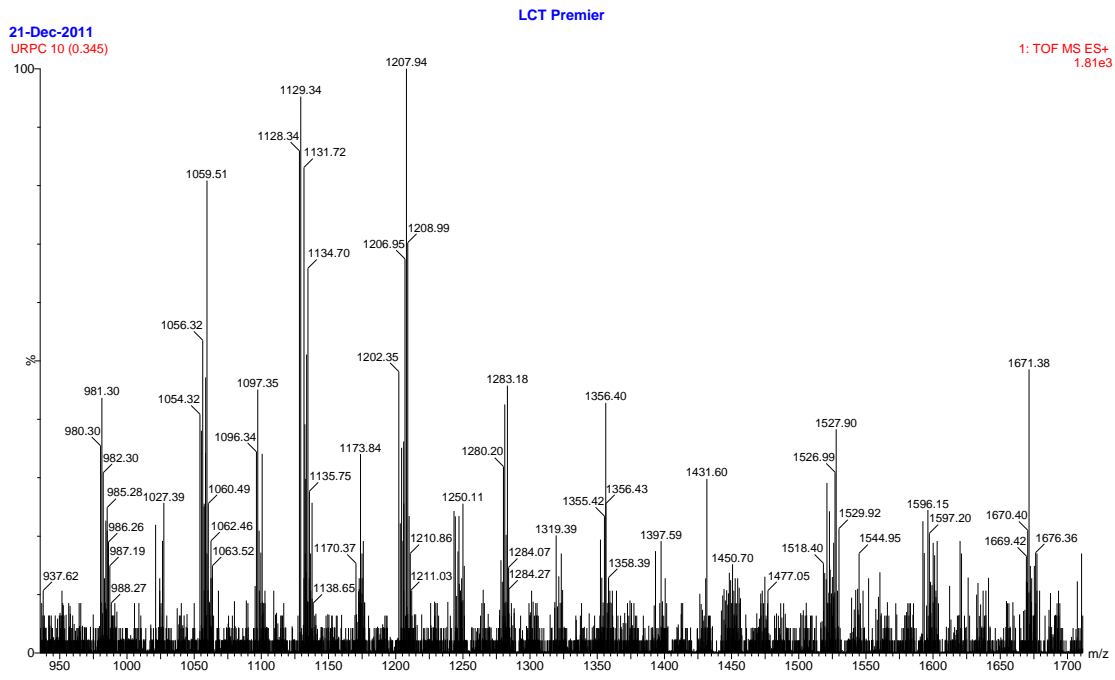


Figure S28: +ESI-TOF-MS spectra of compound C. a) High resolution (HR) of the high molecular weight region; b) Low molecular weight region



Current Data Parameters
NAME UIA_C
EXPNO 1
PROCNO 2

F2 - Acquisition Parameters
Date_ 20100804
Time 16.49
INSTRUM spect
PROBHD 5 mm BBI 1H/D-
PULPROG zg30
TD 65536
SOLVENT DMSO
NS 16
DS 2
SWH 8223.685 Hz
FIDRES 0.125483 Hz
AQ 3.9846387 sec
RG 80.6
DW 60.800 usec
DE 6.00 usec
TE 294.7 K
DI 1.00000000 sec
TD0 1

==== CHANNEL f1 =====
NUC1 1H
P1 7.65 usec
PL1 -2.00 dB
SFO1 400.1324710 MHz

F2 - Processing parameters
SI 32768
SF 400.1300000 MHz
WDW EM
SSB 0
LB 0.30 Hz
GB 0
PC 1.00

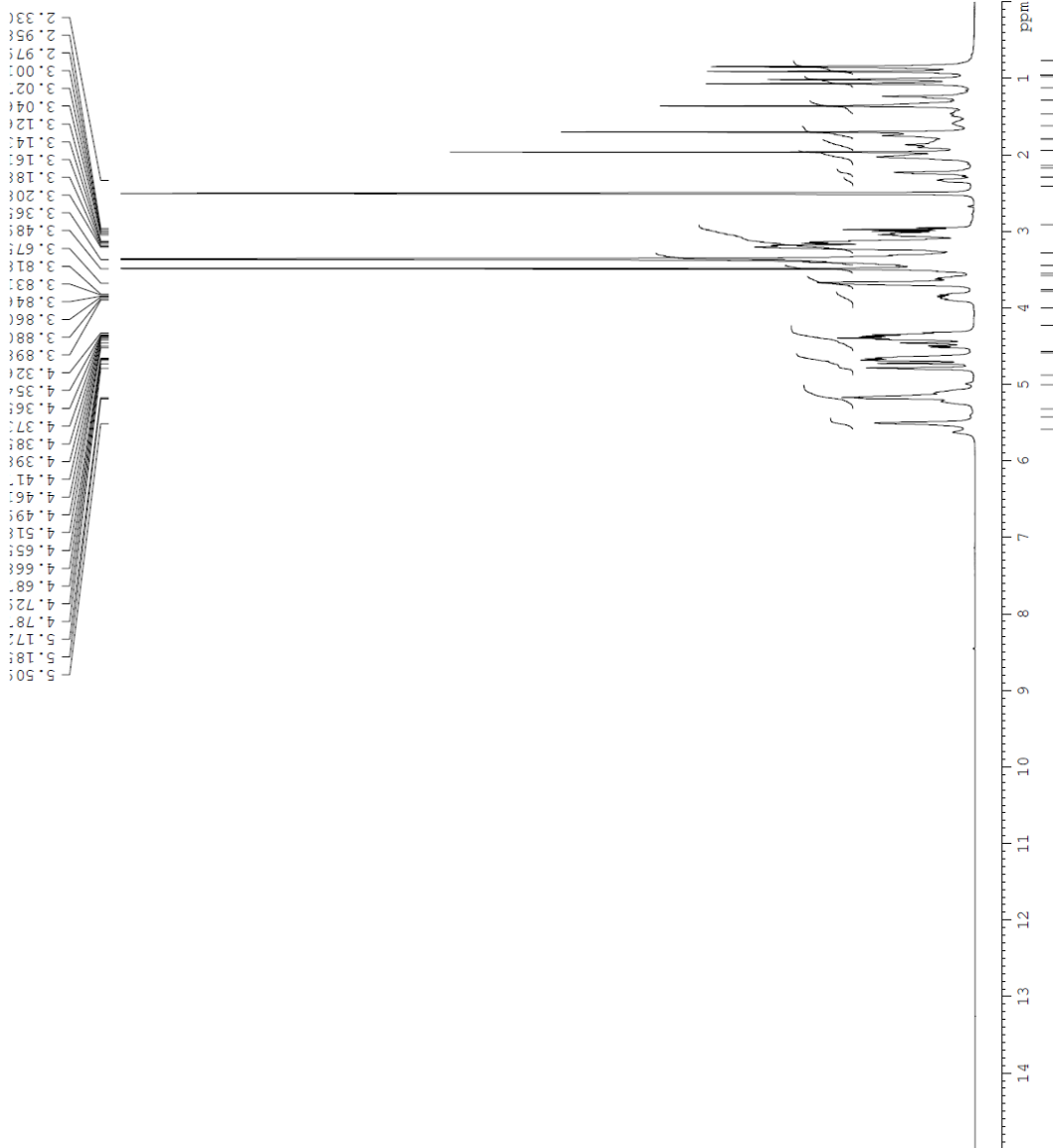


Figure S29: Proton NMR spectrum of compound C

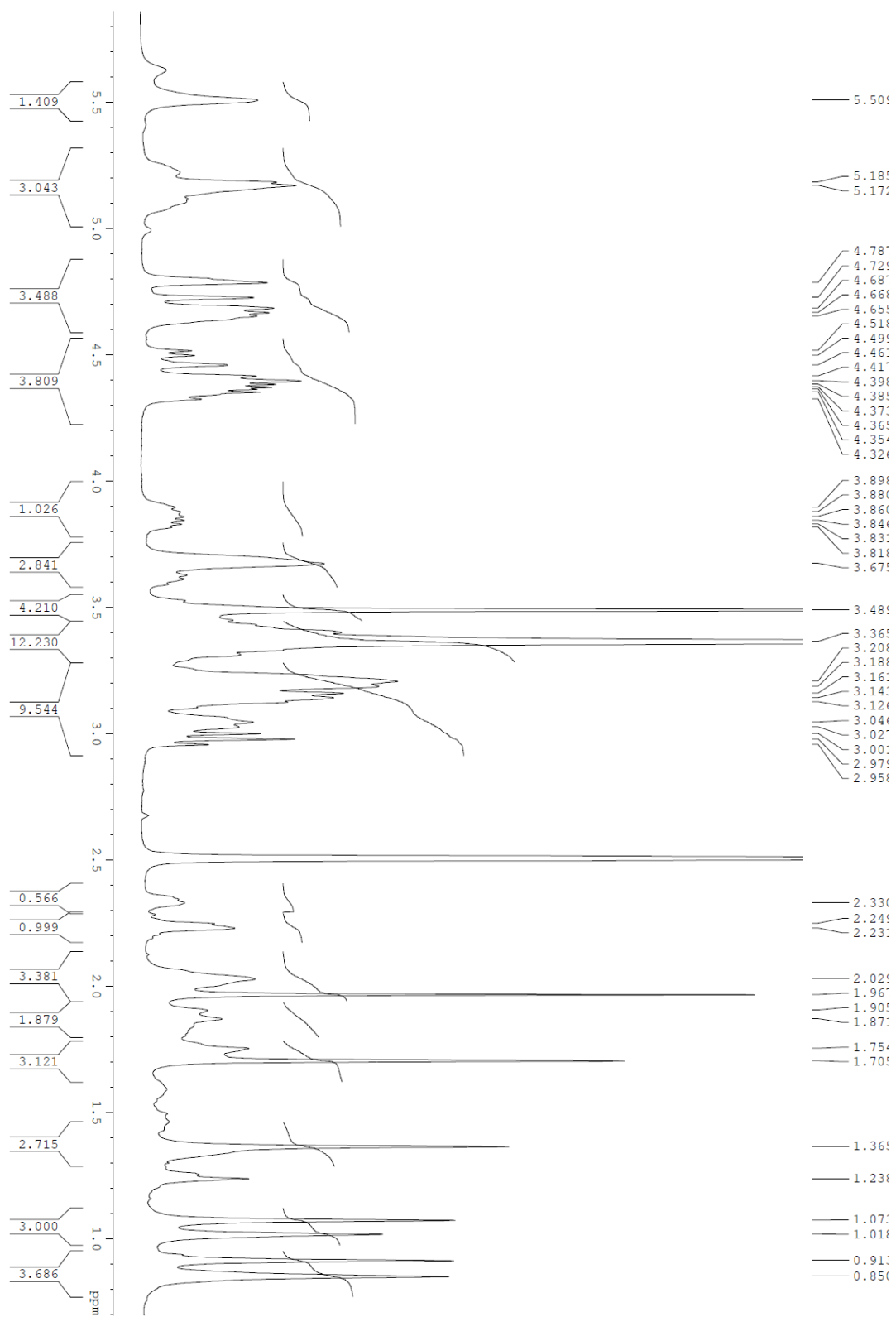


Figure S30: First expanding of PROTON NMR spectrum of compound C

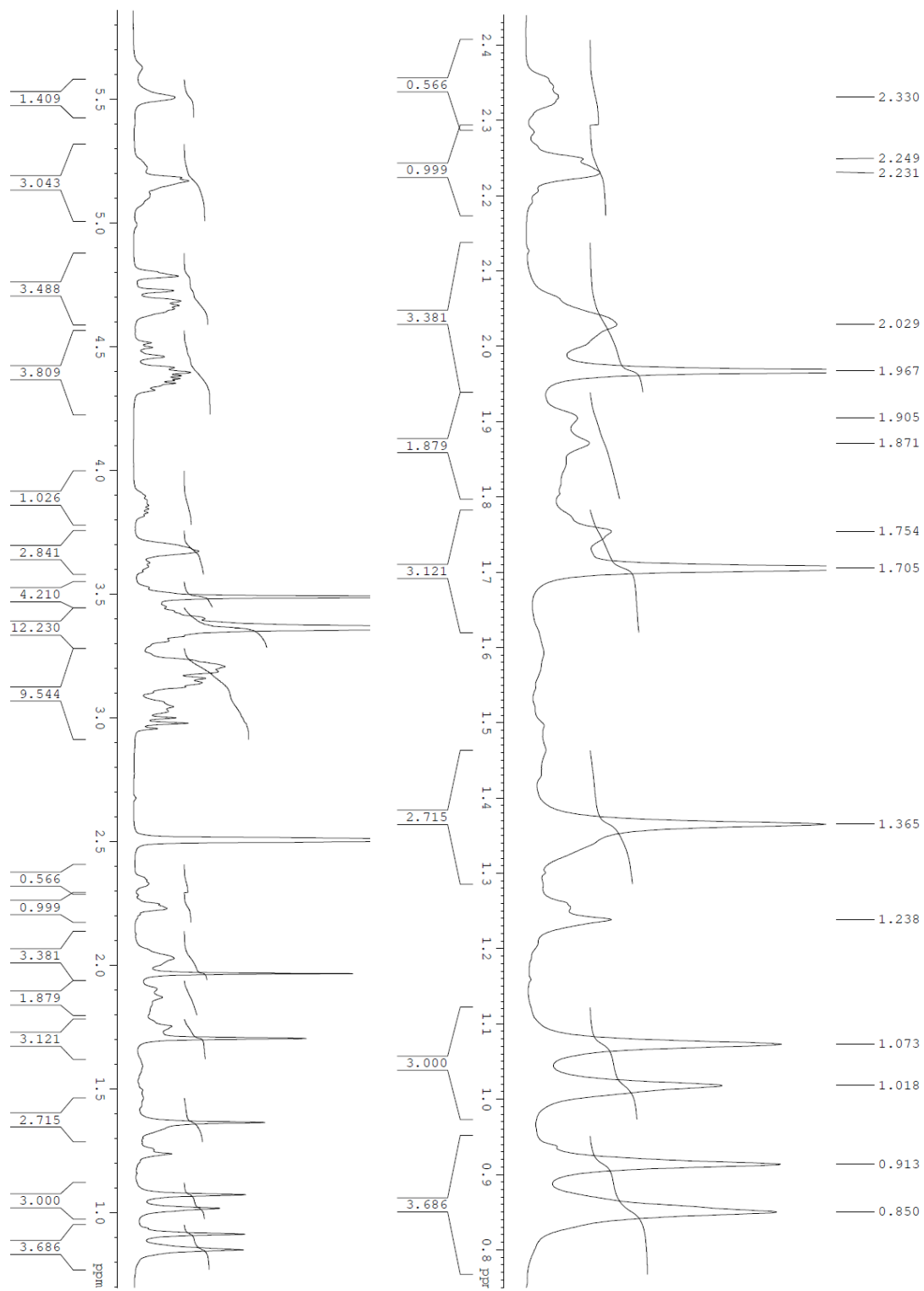


Figure S31: Second expanding of PROTON NMR spectrum of compound C

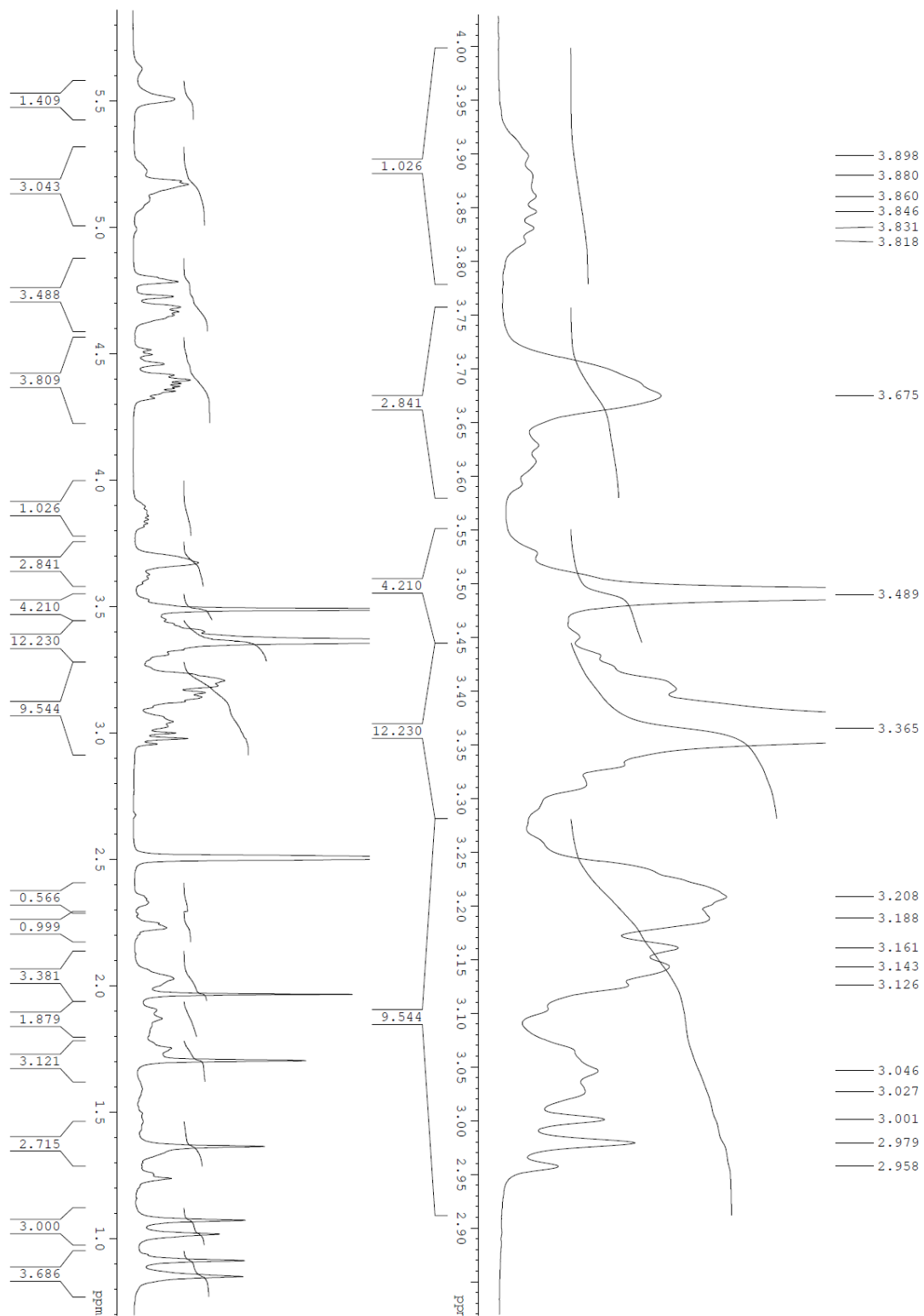


Figure S32: Third expanding of proton NMR spectrum of compound C

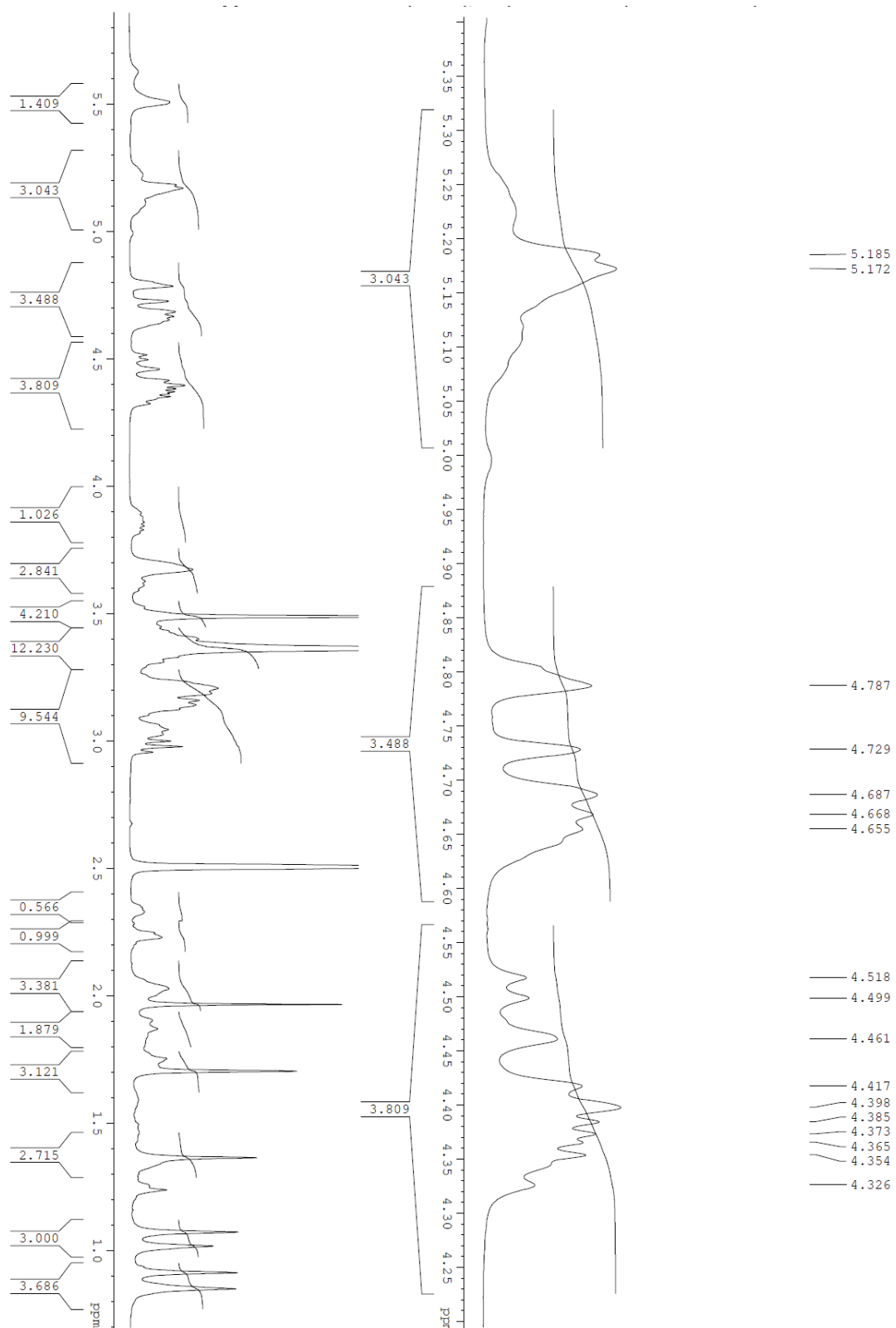


Figure S33: Fourth expanding of PROTON NMR spectrum of compound C

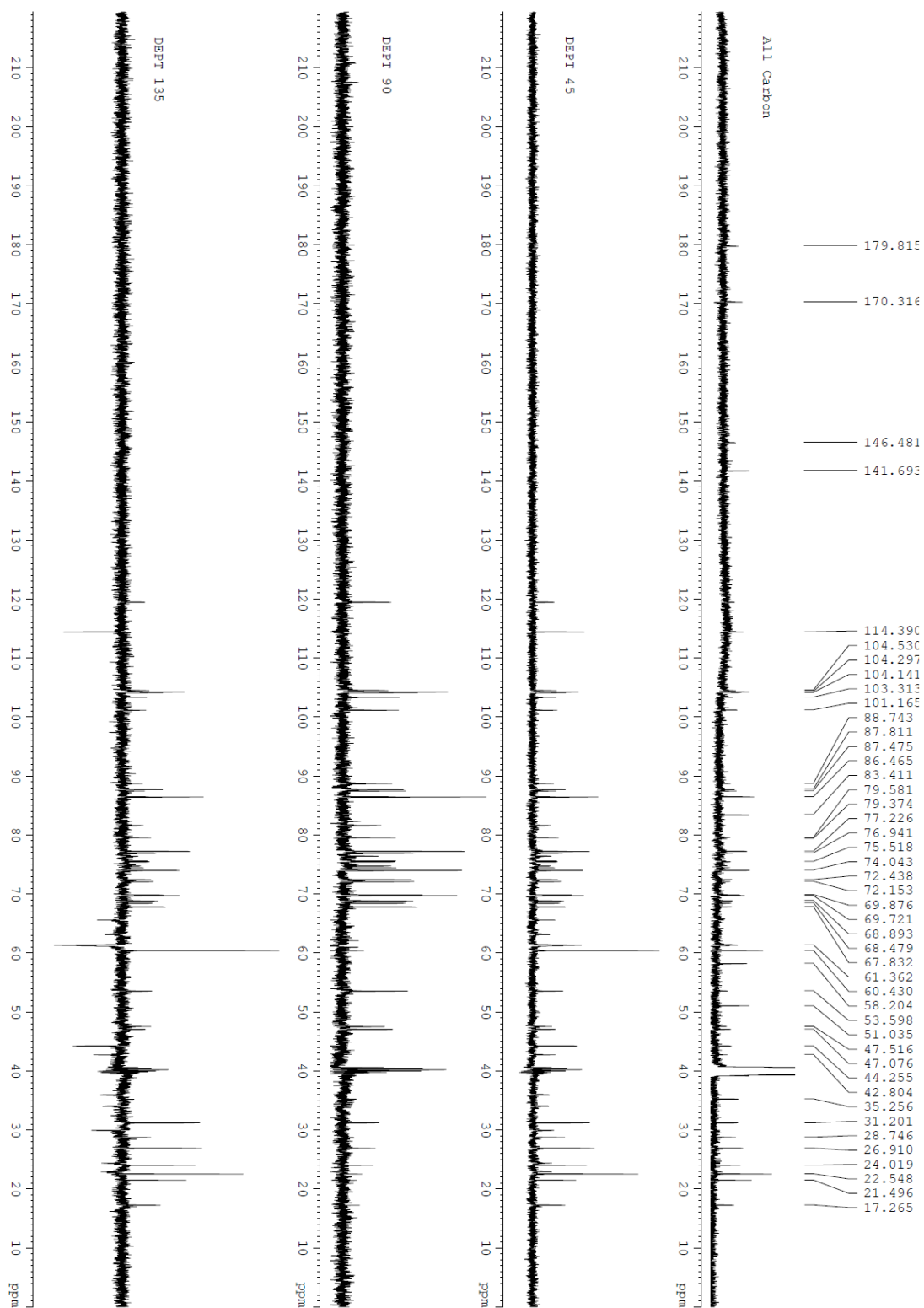


Figure S34: DEPT NMR spectrum of compound C

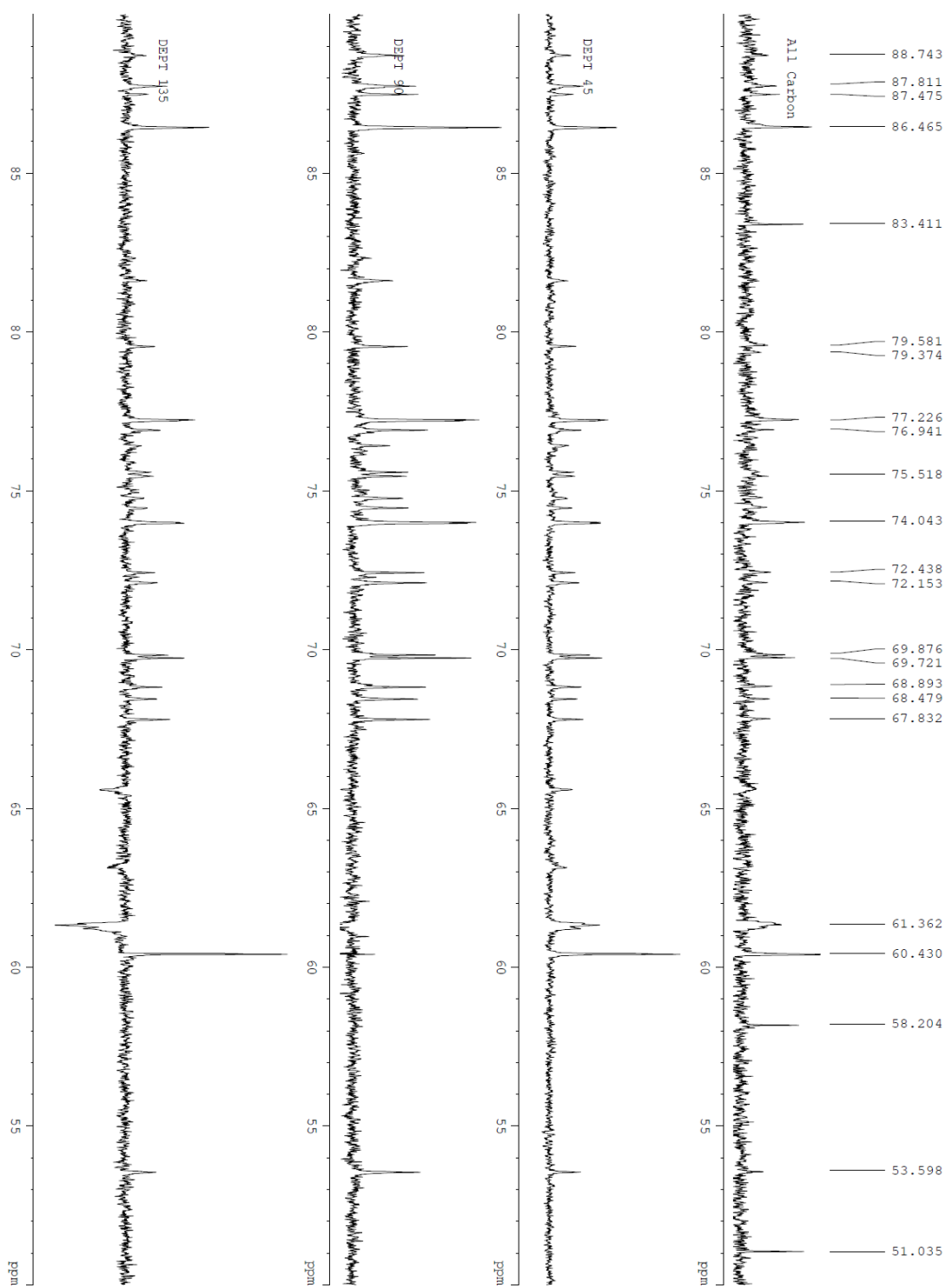


Figure S35: First expanding of DEPT NMR spectrum of compound C

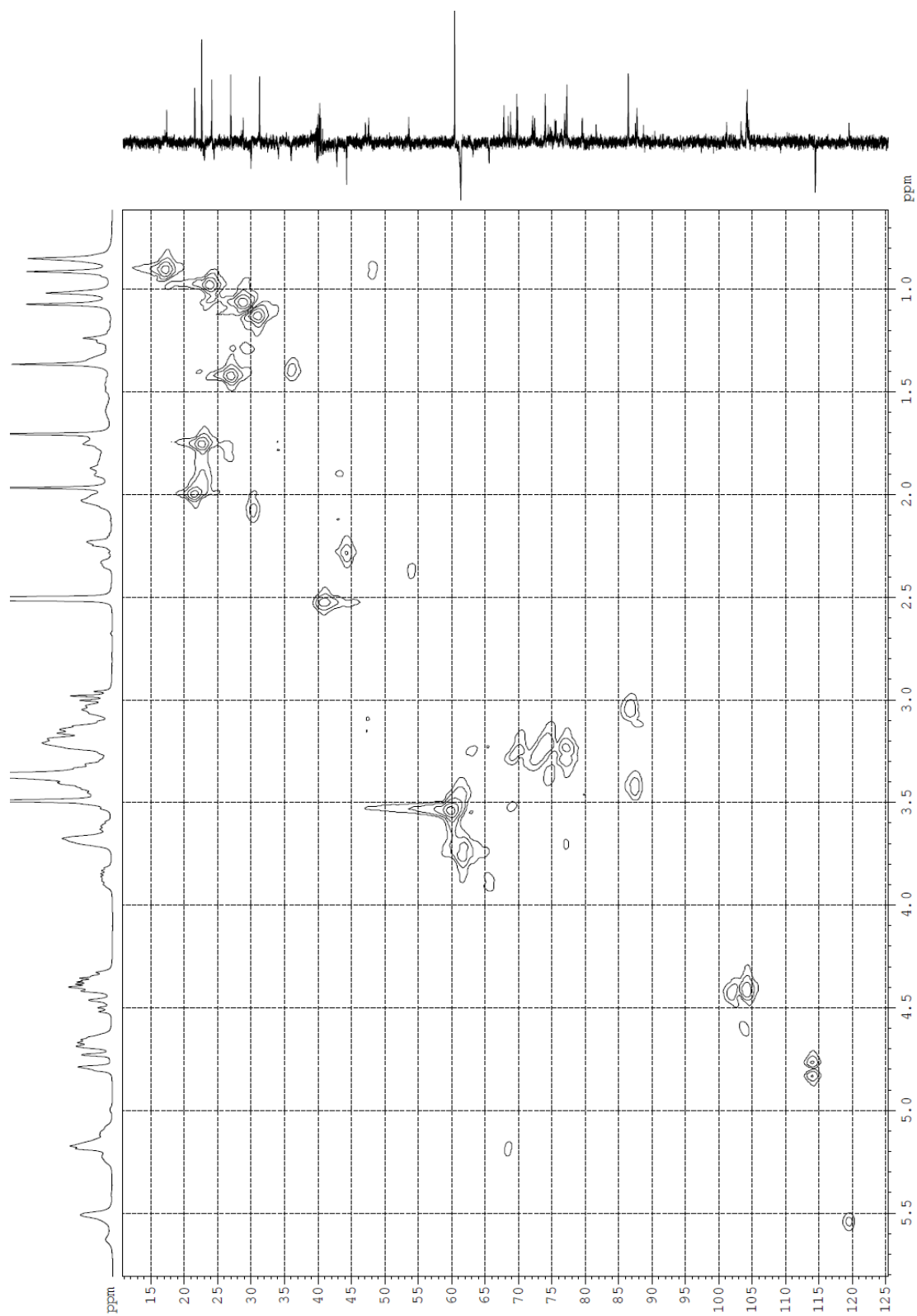


Figure S36: HMQC spectrum of compound C

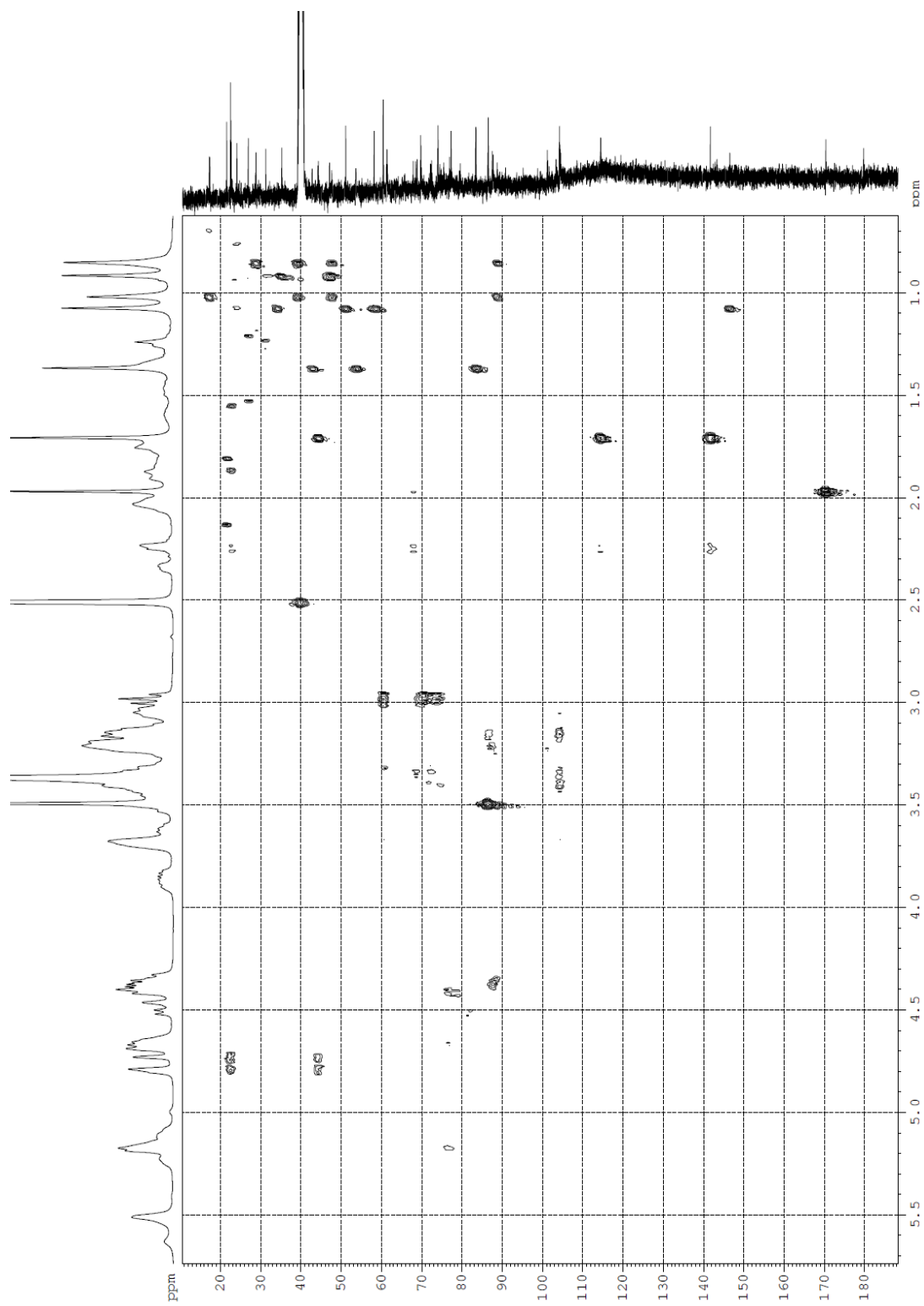


Figure S37: HMBC spectrum of compound C

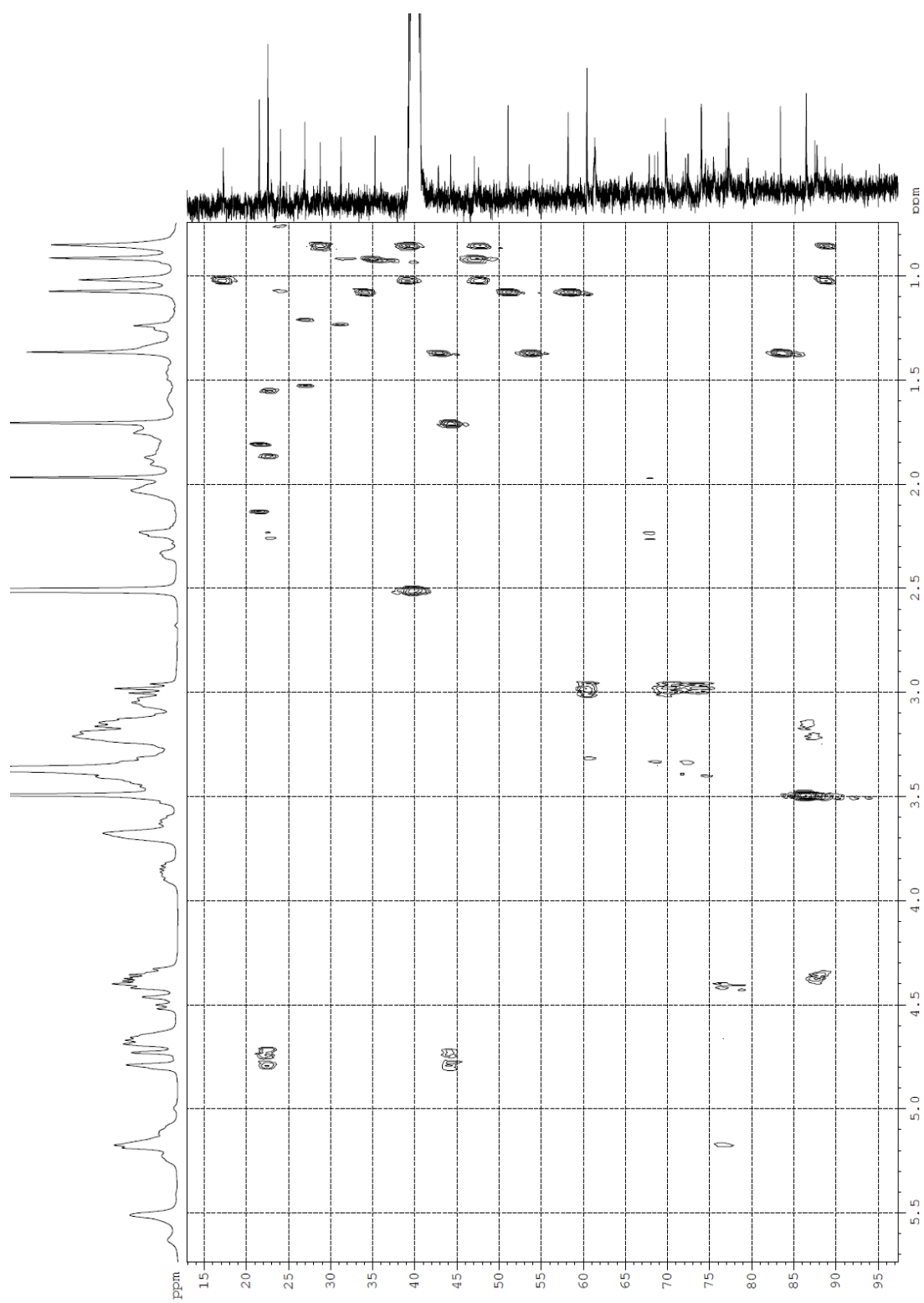


Figure S38: Expanded HMBC spectrum of compound C

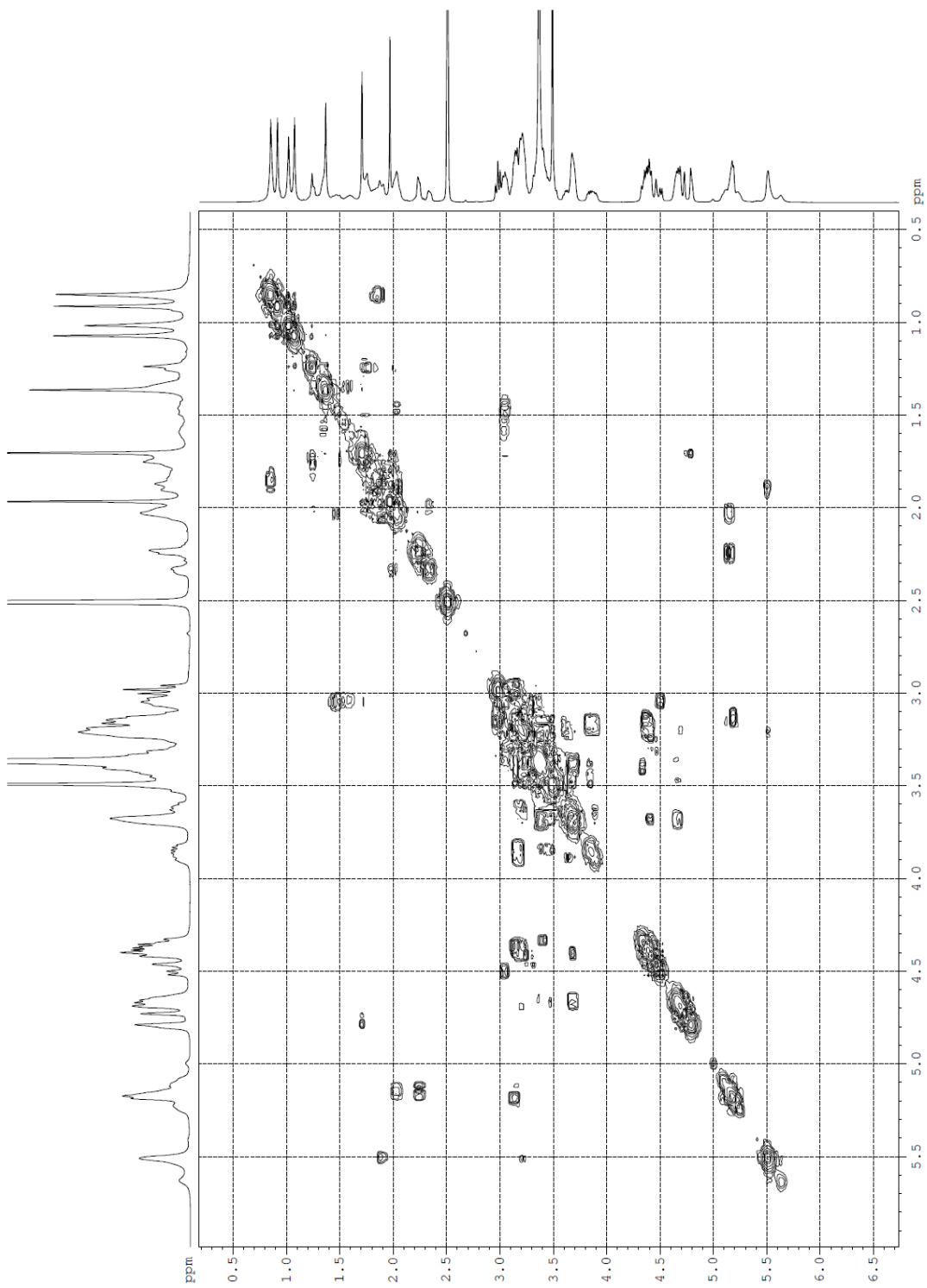


Figure S39: COSY spectrum of compound C